

SR-5A (L35) polyclonal antibody

Catalog: BS2767

Host: Rabbit

Reactivity: Human, Mouse, Rat

Background:

Serotonin actions are mediated by receptors that influence the biochemistry of depression, anxiety, sexuality and appetite. Rat SR-5B is present in serotonergic neurons in dorsal raphe (DR) and central superior nucleus (CS, median raphe nucleus). DR cell bodies showing SR-5B mRNA expression are abundant in the medial portions of the nucleus. CS coexpression of SR-5B receptor mRNA with Serotonin transporter mRNA is high in the intermediate portions of the nucleus. Serotonin receptors include SR-1-7 (5HT1-7). Subtypes within the SR-1 group include SR-1A, -1B, -1D, -1E and -1F. Subtypes within the SR-2 group include SR-2A, -2B and -2C. Subtypes within the SR-5 group include SR-5A and -5B.

Product:

Rabbit IgG, 1mg/ml in PBS with 0.02% sodium azide, 50% glycerol, pH7.2

Molecular Weight:

~ 40 kDa

Swiss-Prot:

P47898

Purification&Purity:

The antibody was affinity-purified from rabbit antiserum by affinity-chromatography using epitope-specific im-

munogen and the purity is > 95% (by SDS-PAGE).

Applications:

IHC: 1:50~1:200

IF: 1:50~1:200

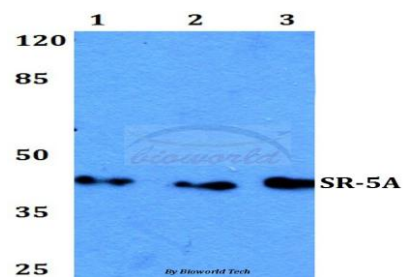
Storage&Stability:

Store at 4 °C short term. Aliquot and store at -20 °C long term. Avoid freeze-thaw cycles.

Specificity:

SR-5A (L35) polyclonal antibody detects endogenous levels of SR-5A protein.

DATA:



Note:

For research use only, not for use in diagnostic procedure.

Bioworld Technology, Inc.

Add: 1660 South Highway 100, Suite 500 St. Louis Park, MN 55416, USA.

Email: info@bioworld.com

Tel: 6123263284

Fax: 6122933841

Bioworld technology, co. Ltd.

Add: No 9, weidi road Qixia District Nanjing, 210046, P. R. China.

Email: info@biogot.com

Tel: 0086-025-68037686

Fax: 0086-025-68035151