

ErbB-3 (D1324) polyclonal antibody

Catalog: BS2638

Host: Rabbit

Reactivity: Human, Mouse, Rat

BackGround:

The EGF receptor family comprises several related receptor tyrosine kinases that are frequently overexpressed in a variety of carcinomas. Members of this receptor family include EGFR (HER1), Neu (ErbB-2, HER2), ErbB-3 (HER3) and ErbB-4 (HER4), which form either homodimers or heterodimers upon ligand binding. Full length ErbB-3 is overexpressed in human mammary tumors. The ErbB-3 gene also produces several alternative variants, including a secreted form which negatively regulates heregulin stimulated ErbB activation. ErbB-3 heterodimerizes with Neu and binds heregulin in order to activate phosphoinositide (PI) 3-kinase. The recruitment and activation of PI 3-kinase occurs via its interaction with phosphorylated YXXM motifs in the carboxy terminus of ErbB-3.

Product:

Rabbit IgG, 1mg/ml in PBS with 0.02% sodium azide, 50% glycerol, pH7.2

Molecular Weight:

~ 148, 185 kDa

Swiss-Prot:

P21860

Purification&Purity:

The antibody was affinity-purified from rabbit antiserum by affinity-chromatography using epitope-specific immunogen and the purity is > 95% (by SDS-PAGE).

Applications:

WB: 1:500~1:1000

IHC: 1:50~1:200

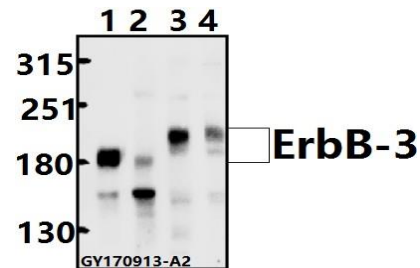
Storage&Stability:

Store at 4 °C short term. Aliquot and store at -20 °C long term. Avoid freeze-thaw cycles.

Specificity:

HER3 (D1324) polyclonal antibody detects endogenous levels of HER3 protein.

DATA:



Western blot (WB) analysis of ErbB-3 (D1324) pAb at 1:500 dilution

Lane1:MCF-7 whole cell lysate(40ug)

Lane2:PC3 whole cell lysate(40ug)

Lane3:PC12 whole cell lysate(40ug)

Lane4:AML-12 whole cell lysate(40ug)

Note:

For research use only, not for use in diagnostic procedure.

Bioworld Technology, Inc.

Add: 1660 South Highway 100, Suite 500 St. Louis Park, MN 55416, USA.

Email: info@bioworld.com

Tel: 6123263284

Fax: 6122933841

Bioworld technology, co. Ltd.

Add: No 9, weidi road Qixia District Nanjing, 210046, P. R. China.

Email: info@biogot.com

Tel: 0086-025-68037686

Fax: 0086-025-68035151