

## PRODUCT DATA SHEET



Bioworld Technology, Inc.

### NY-CO-1 (K914) Antibody

Cat No.: BS2456

Host: Rabbit

Reactivity: Human, Mouse, Rat

#### BACKGROUND

SDCG1, serologically defined colon cancer antigen 1, belongs to the SDCCAG1 family. 2 isoforms of the human protein are produced by alternative splicing

#### PRODUCT

1 mg/ml in Phosphate buffered saline (PBS) with 15 mM sodium azide, approx. pH 7.2.

#### PURIFICATION & PURITY

The antibody was affinity-purified from rabbit antiserum by affinity-chromatography using epitope-specific immunogen and the purity is > 95% (by SDS-PAGE).

#### APPLICATIONS

WB: 1:500 ~ 1:1000

IHC: 1:50 ~ 1:200 (Recommended Dilutions)

#### STORAGE & STABILITY

Store at 4°C short term. Aliquot and store at -20°C long term. Avoid freeze-thaw cycles.

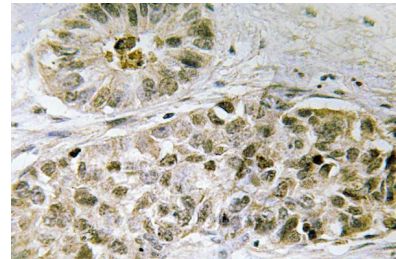
#### SPECIFICITY

NY-CO-1 (K914) antibody detects endogenous levels of NY-CO-1 protein.

#### DATA

NY-CO-1-  
-175  
-83  
-62

Western blot (WB) analysis of NY-CO-1 (K914) antibody in extracts from HeLa cells.



Immunohistochemistry (IHC) analyzes of NY-CO-1 (K914) antibody in paraffin-embedded human lung carcinoma tissue.

#### RESEARCH USE

For research use only, not for use in diagnostic procedures.

Bioworld Technology, Inc.

1660 South Highway 100, Suite 500 St. Louis Park, MN 55416, USA. Tel: 6123263284  
www.bioworlde.com Orders: order@bioworlde.com Support: support@bioworlde.com