

## AMPK $\beta$ 1 (H17) polyclonal antibody

Catalog: BS2406

Host: Rabbit

Reactivity: Human, Mouse, Rat

### Background:

AMPK $\beta$ 1 is a member of the SNF1 kinase family. It is a heterotrimeric protein comprising of an alpha (catalytic), beta (non-catalytic) and gamma (non-catalytic) subunits, 63, 38 and 38kDa respectively. AMPK $\beta$ 1 regulates fatty acid and sterol synthesis by phosphorylation of acetyl-coA. It also regulates cholesterol synthesis via phosphorylation and in-activation of hydroxymethylglutaryl-CoA reductase. Two isoforms of AMPK $\beta$ 1 have been found.

### Product:

Rabbit IgG, 1mg/ml in PBS with 0.02% sodium azide, 50% glycerol, pH7.2

### Molecular Weight:

~ 38 kDa

### Swiss-Prot:

Q9Y478

### Purification&Purity:

The antibody was affinity-purified from rabbit antiserum by affinity-chromatography using epitope-specific immunogen and the purity is > 95% (by SDS-PAGE).

### Applications:

IHC: 1:50~1:200

IF: 1:50~1:200

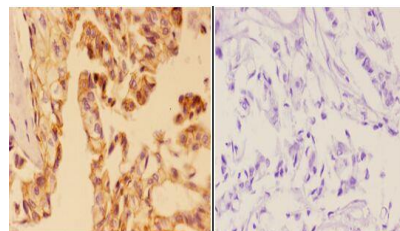
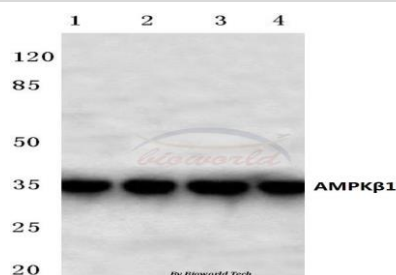
### Storage&Stability:

Store at 4 °C short term. Aliquot and store at -20 °C long term. Avoid freeze-thaw cycles.

### Specificity:

AMPK $\beta$ 1 (H17) polyclonal antibody detects endogenous levels of AMPK $\beta$ 1 protein.

### DATA:



BS2406  
Lot CA36131

Immunohistochemistry (IHC) analyzes of AMPK $\beta$ 1 (H17) pAb in paraffin-embedded human breast carcinoma tissue at 1:50, showing cytoplasm and nuclear staining. Negative control (the right) Using PBS instead of primary antibody, secondary antibody is Goat Anti-Rabbit IgG-biotin followed by avidin-peroxidase.

### Note:

For research use only, not for use in diagnostic procedure.

### Bioworld Technology, Inc.

Add: 1660 South Highway 100, Suite 500 St. Louis Park, MN 55416, USA.

Email: [info@bioworld.com](mailto:info@bioworld.com)

Tel: 6123263284

Fax: 6122933841

### Bioworld technology, co. Ltd.

Add: No 9, weidi road Qixia District Nanjing, 210046, P. R. China.

Email: [info@biogot.com](mailto:info@biogot.com)

Tel: 0086-025-68037686

Fax: 0086-025-68035151