

## ADCY 1 (D252) polyclonal antibody

Catalog: BS2391

Host: Rabbit

Reactivity: Human, Mouse, Rat

### Background:

Cyclic AMP, in turn, activates several other target molecules to control a broad range of diverse phenomena such as metabolism, gene transcription and memory. Adenylyl cyclases respond to receptor-initiated signals, mediated by the Gs and Gi heterotrimeric G proteins. The binding of an agonist to a Gs-coupled receptor catalyzes the exchange of GDP (bound to  $G\alpha_s$ ) for GTP, the dissociation of  $GTP-G\alpha_s$  from  $G\beta\gamma$  and  $G\alpha_s$ -mediated activation of adenylyl cyclase. Adenylyl cyclases type I (AC I) and III (AC III) have distinct staining within the cell nucleus of rat brain sensory neurons. A cyclase I, also known as AC1 or ADCY1, is a 1,119 amino acid multi-pass membrane protein expressed in the brain, retina and adrenal medulla. A cyclase I binds two magnesium ions per subunit and may be involved in regulatory processes in the central nervous system.

### Product:

Rabbit IgG, 1mg/ml in PBS with 0.02% sodium azide, 50% glycerol, pH7.2

### Molecular Weight:

~ 130 kDa

### Swiss-Prot:

Q08828

### Purification&Purity:

The antibody was affinity-purified from rabbit antiserum by affinity-chromatography using epitope-specific immunogen and the purity is > 95% (by SDS-PAGE).

### Applications:

WB: 1:500~1:1000

IHC: 1:50~1:200

### Storage&Stability:

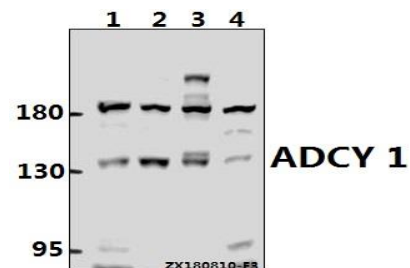
Store at 4 °C short term. Aliquot and store at -20 °C long term. Avoid freeze-thaw cycles.

### Specificity:

ADCY 1 (D252) polyclonal antibody detects endogenous

levels of Adenylate cyclase type 1 protein.

### DATA:



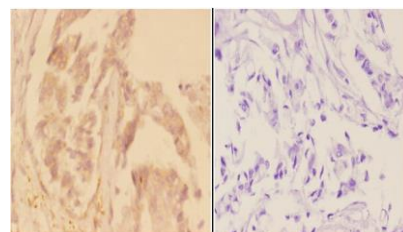
Western blot (WB) analysis of ADCY 1 (D252) Antibody at 1:500 dilution

Lane1:HEK293T whole cell lysate(40ug)

Lane2:MCF-7 whole cell lysate(40ug)

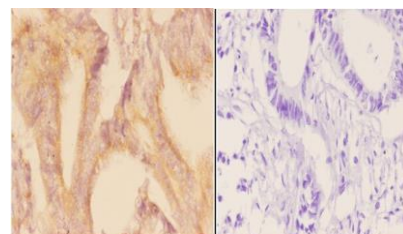
Lane3:C6 whole cell lysate(40ug)

Lane4:AML-12 whole cell lysate(40ug)



BS2391  
Lot: C144127

Immunohistochemistry (IHC) analyzes of ADCY 1 (D252) pAb in paraffin-embedded human breast carcinoma tissue at 1:50, showing cytoplasm and membrane staining. Negative control (the right) Using PBS instead of primary antibody, secondary antibody is Goat Anti-Rabbit IgG-biotin followed by avidin-peroxidase.



BS2391  
Lot: C144127

Immunohistochemistry (IHC) analyzes of ADCY 1 (D252) pAb in paraffin-embedded human rectum carcinoma tissue at 1:50, showing cyto-

### Bioworld Technology, Inc.

Add: 1660 South Highway 100, Suite 500 St. Louis Park, MN 55416, USA.

Email: [info@bioworld.com](mailto:info@bioworld.com)

Tel: 6123263284

Fax: 6122933841

### Bioworld technology, co. Ltd.

Add: No 9, weidi road Qixia District Nanjing, 210046, P. R. China.

Email: [info@biogot.com](mailto:info@biogot.com)

Tel: 0086-025-68037686

Fax: 0086-025-68035151



## PRODUCT DATA SHEET

Bioworld Technology, Inc.

plasm and membrane staining. Negative control (the right) Using PBS instead of primary antibody, secondary antibody is Goat Anti-Rabbit IgG-biotin followed by avidin-peroxidase.

**Note:**

For research use only, not for use in diagnostic procedure.

---

**Bioworld Technology, Inc.**

Add: 1660 South Highway 100, Suite 500 St. Louis Park,  
MN 55416, USA.

Email: [info@bioworld.com](mailto:info@bioworld.com)

Tel: 6123263284

Fax: 6122933841

**Bioworld technology, co. Ltd.**

Add: No 9, weidi road Qixia District Nanjing, 210046,  
P. R. China.

Email: [info@biogot.com](mailto:info@biogot.com)

Tel: 0086-025-68037686

Fax: 0086-025-68035151