

## ROR $\alpha$ (G41) polyclonal antibody

Catalog: BS2272

Host: Rabbit

Reactivity: Human, Mouse, Rat

### Background:

Retinoid related orphan receptor alpha (ROR alpha) is a NR1 Thyroid Hormone Like Receptor. To date, ROR alpha, beta, and gamma subtypes have been discovered. ROR alpha has been shown to affect the development of the central nervous system. Deletion of ROR alpha in mice causes severe impairment in the differentiation of cerebellar Purkinje neurons and results in the "staggerer" phenotype. ROR alpha has been suggested as a potential target in the treatment of chronic inflammatory diseases, including atherosclerosis and rheumatoid arthritis.

### Product:

Rabbit IgG, 1mg/ml in PBS with 0.02% sodium azide, 50% glycerol, pH7.2

### Molecular Weight:

~ 60 kDa

### Swiss-Prot:

P35398

### Purification&Purity:

The antibody was affinity-purified from rabbit antiserum by affinity-chromatography using epitope-specific immunogen and the purity is > 95% (by SDS-PAGE).

### Applications:

IHC: 1:50~1:200

IF: 1:50~1:200

### Storage&Stability:

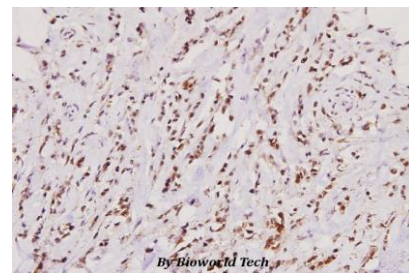
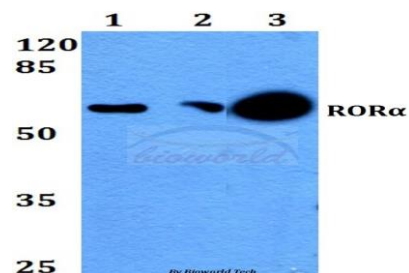
Store at 4 °C short term. Aliquot and store at -20 °C long

term. Avoid freeze-thaw cycles.

### Specificity:

ROR $\alpha$  (G41) polyclonal antibody detects endogenous levels of ROR $\alpha$  protein.

### DATA:



Immunohistochemistry (IHC) analyzes of ROR $\alpha$  (G41) pAb in paraffin-embedded human breast carcinoma tissue at 1:100.

### Note:

For research use only, not for use in diagnostic procedure.

### Bioworld Technology, Inc.

Add: 1660 South Highway 100, Suite 500 St. Louis Park, MN 55416, USA.

Email: [info@bioworld.com](mailto:info@bioworld.com)

Tel: 6123263284

Fax: 6122933841

### Bioworld technology, co. Ltd.

Add: No 9, weidi road Qixia District Nanjing, 210046, P. R. China.

Email: [info@biogot.com](mailto:info@biogot.com)

Tel: 0086-025-68037686

Fax: 0086-025-68035151