

## PKA I $\beta$ reg (F138) polyclonal antibody

Catalog: BS2269

Host: Rabbit

Reactivity: Human, Mouse, Rat

### BackGround:

The second messenger cyclic AMP (cAMP) mediates diverse cellular responses to external signals such as proliferation, ion transport, regulation of metabolism and gene transcription by activation of the cAMP-dependent protein kinase (cAPK or PKA). Activation of PKA occurs when cAMP binds to the two regulatory subunits of the tetrameric PKA holoenzyme resulting in release of active catalytic subunits. Three catalytic (C) subunits have been identified, designated C $\alpha$ , C $\beta$  and C $\gamma$ , that each represent specific gene products. C $\alpha$  and C $\beta$  are closely related (93% amino acid sequence similarity), whereas C $\gamma$  displays 83% and 79% similarity to C $\alpha$  and C $\beta$ , respectively.

### Product:

Rabbit IgG, 1mg/ml in PBS with 0.02% sodium azide, 50% glycerol, pH7.2

### Molecular Weight:

~ 50 kDa

### Swiss-Prot:

P31321

### Purification&Purity:

The antibody was affinity-purified from rabbit antiserum by affinity-chromatography using epitope-specific immunogen and the purity is > 95% (by SDS-PAGE).

### Applications:

WB: 1:500~1:1000

IHC: 1:50~1:200

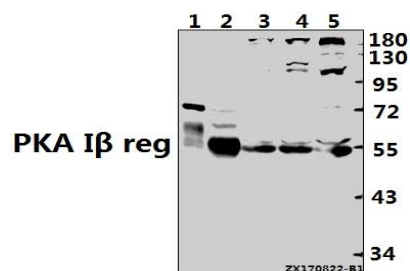
### Storage&Stability:

Store at 4 °C short term. Aliquot and store at -20 °C long term. Avoid freeze-thaw cycles.

### Specificity:

PKA I $\beta$  reg (F138) polyclonal antibody detects endogenous levels of PKA I $\beta$  reg protein.

### DATA:



Western blot (WB) analysis of PKA I $\beta$  reg (F138) pAb at 1:500 dilution

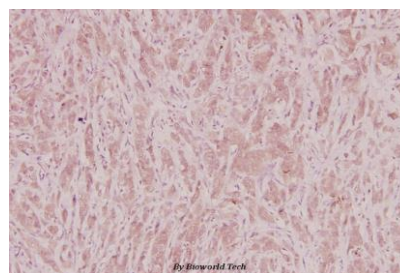
Lane1: The Brain tissue lysate of Mouse (10ug)

Lane2: The Brain tissue lysate of Rat (20ug)

Lane3: MCF-7 whole cell lysate (40ug)

Lane4: A549 whole cell lysate (40ug)

Lane5: K562 whole cell lysate (40ug)



Immunohistochemistry (IHC) analyzes of PKA I $\beta$  reg (F138) pAb in paraffin-embedded human breast carcinoma tissue at 1:100.

### Note:

For research use only, not for use in diagnostic procedure.

### Bioworld Technology, Inc.

Add: 1660 South Highway 100, Suite 500 St. Louis Park, MN 55416, USA.

Email: [info@bioworld.com](mailto:info@bioworld.com)

Tel: 6123263284

Fax: 6122933841

### Bioworld technology, co. Ltd.

Add: No 9, weidi road Qixia District Nanjing, 210046, P. R. China.

Email: [info@biogot.com](mailto:info@biogot.com)

Tel: 0086-025-68037686

Fax: 0086-025-68035151