

ADCY 5/6 (F1052) polyclonal antibody

Catalog: BS2208

Host: Rabbit

Reactivity: Human, Mouse, Rat

Background:

A cyclase V, also known as ADCY5, is a 1,261 amino acid Adenylyl cyclase that localizes to cellular membranes and contains two guanylate cyclase domains. Similar to other A cyclase proteins, A cyclase V uses magnesium as a cofactor to catalyze the conversion of ATP to cAMP. A cyclase VI, also known as ADCY6 (adenylate cyclase type 6), is a 1,168 amino acid A cyclase that localizes to the membrane and contains two guanylate cyclase domains. Using magnesium as a cofactor, A cyclase VI functions as a calcium-inhibitable A cyclase that catalyzes the conversion of ATP to 3',5'-cyclic AMP and diphosphate and plays a role in a variety of events throughout the body. Multiple isoforms of A cyclase VI exist due to alternative splicing events.

Product:

Rabbit IgG, 1mg/ml in PBS with 0.02% sodium azide, 50% glycerol, pH7.2

Molecular Weight:

~ 130, 139 kDa

Swiss-Prot:

O95622/O43306

Purification&Purity:

The antibody was affinity-purified from rabbit antiserum by affinity-chromatography using epitope-specific immunogen and the purity is > 95% (by SDS-PAGE).

Applications:

WB: 1:500~1:1000

IHC: 1:50~1:200

IF: 1:50~1:200

Storage&Stability:

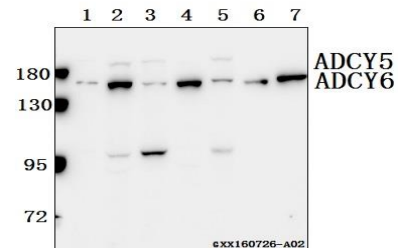
Store at 4 °C short term. Aliquot and store at -20 °C long term. Avoid freeze-thaw cycles.

Specificity:

ADCY 5/6 (F1052) polyclonal antibody detects endogenous levels of Adenylate cyclase type 5 and Adenylate

cyclase type 6 protein.

DATA:



Western blot (WB) analysis of ADCY 5/6 (F1052) polyclonal antibody at 1:500 dilution

Lane1:Panc1 whole cell lysate(40ug)

Lane2:PC3 whole cell lysate(40ug)

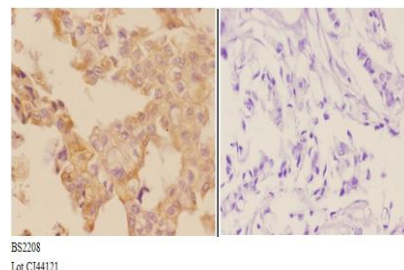
Lane3:HEK293T whole cell lysate(40ug)

Lane4:Hela whole cell lysate(40ug)

Lane5:MCF-7 whole cell lysate(40ug)

Lane6:The Pancreas tissue lysate of Mouse(40ug)

Lane7:The Pancreas tissue lysate of Rat(40ug)



Immunohistochemistry (IHC) analyzes of ADCY 5/6 (F1052) pAb in paraffin-embedded human breast carcinoma tissue at 1:50, showing cytoplasm and membrane staining. Negative control (the right) Using PBS instead of primary antibody, secondary antibody is Goat Anti-Rabbit IgG-biotin followed by avidin-peroxidase.

Bioworld Technology, Inc.

Add: 1660 South Highway 100, Suite 500 St. Louis Park, MN 55416, USA.

Email: info@bioworld.com

Tel: 6123263284

Fax: 6122933841

Bioworld technology, co. Ltd.

Add: No 9, weidi road Qixia District Nanjing, 210046, P. R. China.

Email: info@biogot.com

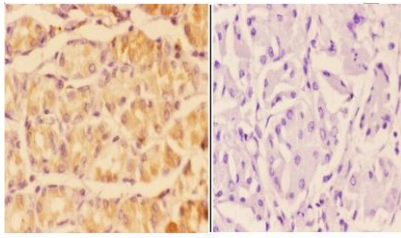
Tel: 0086-025-68037686

Fax: 0086-025-68035151



PRODUCT DATA SHEET

Bioworld Technology, Inc.



BS2208
Lot CT44121

Immunohistochemistry (IHC) analyzes of ADCY 5/6 (F1052) pAb in paraffin-embedded human stomach carcinoma tissue at 1:50, showing cytoplasm and membrane staining. Negative control (the right) Using PBS instead of primary antibody, secondary antibody is Goat Anti-Rabbit IgG-biotin followed by avidin-peroxidase.

Note:

For research use only, not for use in diagnostic procedure.

Bioworld Technology, Inc.

Add: 1660 South Highway 100, Suite 500 St. Louis Park,
MN 55416, USA.

Email: info@bioworld.com

Tel: 6123263284

Fax: 6122933841

Bioworld technology, co. Ltd.

Add: No 9, weidi road Qixia District Nanjing, 210046,
P. R. China.

Email: info@biogot.com

Tel: 0086-025-68037686

Fax: 0086-025-68035151