

## Actinin- $\alpha$ 3 (E25) polyclonal antibody

Catalog: BS2205

Host: Rabbit

Reactivity: Human, Mouse, Rat

### BackGround:

The spectrin gene family encodes a diverse group of cytoskeletal proteins that include spectrins, dystrophins and  $\alpha$ -actinins. There are four tissue-specific  $\alpha$ -actinins, namely  $\alpha$ -actinin-1,  $\alpha$ -actinin-2,  $\alpha$ -actinin-3 and  $\alpha$ -actinin-4, which are localized to muscle and non-muscle cells, including skeletal, cardiac and smooth muscle cells, as well as within the cytoskeleton. Each  $\alpha$ -actinin protein contains one Actin-binding domain, two calponin-homology domains, two EF-hand domains and four spectrin repeats, through which they function as bundling proteins that can cross-link F-Actin, thus anchoring Actin to a variety of intracellular structures. Defects in the gene encoding  $\alpha$ -actinin-4 are the cause of focal segmental glomerulosclerosis 1 (FSGS1), a common renal lesion characterized by decreasing kidney function and, ultimately, renal failure.

### Product:

Rabbit IgG, 1mg/ml in PBS with 0.02% sodium azide, 50% glycerol, pH7.2

### Molecular Weight:

~ 103 kDa

### Swiss-Prot:

Q08043

### Purification&Purity:

The antibody was affinity-purified from rabbit antiserum by affinity-chromatography using epitope-specific immunogen and the purity is > 95% (by SDS-PAGE).

### Applications:

WB: 1:500~1:1000

IF: 1:50~1:200

### Storage&Stability:

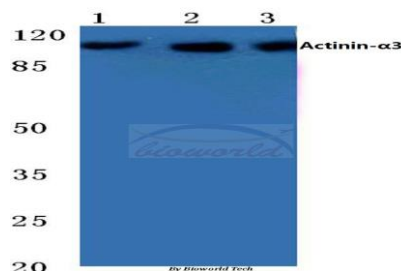
Store at 4 °C short term. Aliquot and store at -20 °C long term. Avoid freeze-thaw cycles.

### Specificity:

Actinin- $\alpha$ 3 (E25) polyclonal antibody detects endogenous

levels of actinin- $\alpha$ 3 protein, this antibody does not cross-react with other  $\alpha$ -actinin isoforms.

### DATA:

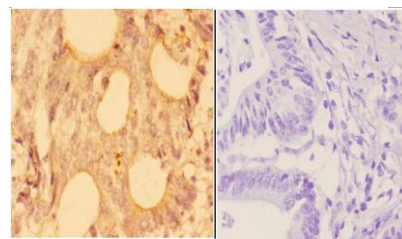


Western blot (WB) analysis of Actinin- $\alpha$ 3 (E25) polyclonal antibody at 1:500 dilution

Lane1:Hela cell lysate

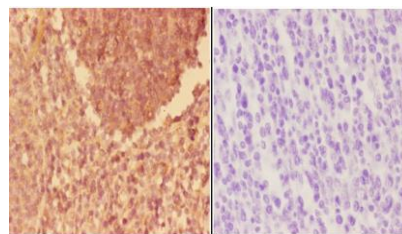
Lane2:Mouse muscle tissue lysate

Lane3:Rat muscle tissue lysate



BS2205  
Lot C136131

Immunohistochemistry (IHC) analyzes of Actinin- $\alpha$ 3 (E25) pAb in paraffin-embedded human colon carcinoma tissue at 1:50, showing cytoplasmic and nucleus staining. Negative control (the right) Using PBS instead of primary antibody, secondary antibody is Goat Anti-Rabbit IgG-biotin followed by avidin-peroxidase.



BS2205  
Lot C136131

Immunohistochemistry (IHC) analyzes of Actinin- $\alpha$ 3 (E25) pAb in paraffin-embedded human tonsil carcinoma tissue at 1:50, showing cyto-

### Bioworld Technology, Inc.

Add: 1660 South Highway 100, Suite 500 St. Louis Park, MN 55416, USA.

Email: [info@bioworld.com](mailto:info@bioworld.com)

Tel: 6123263284

Fax: 6122933841

### Bioworld technology, co. Ltd.

Add: No 9, weidi road Qixia District Nanjing, 210046, P. R. China.

Email: [info@biogot.com](mailto:info@biogot.com)

Tel: 0086-025-68037686

Fax: 0086-025-68035151



## PRODUCT DATA SHEET

Bioworld Technology, Inc.

plasmic and nucleus staining. Negative control (the right) Using PBS instead of primary antibody, secondary antibody is Goat Anti-Rabbit IgG-biotin followed by avidin-peroxidase.

**Note:**

For research use only, not for use in diagnostic procedure.

---

**Bioworld Technology, Inc.**

Add: 1660 South Highway 100, Suite 500 St. Louis Park, MN 55416, USA.

Email: [info@bioworld.com](mailto:info@bioworld.com)

Tel: 6123263284

Fax: 6122933841

**Bioworld technology, co. Ltd.**

Add: No 9, weidi road Qixia District Nanjing, 210046, P. R. China.

Email: [info@biogot.com](mailto:info@biogot.com)

Tel: 0086-025-68037686

Fax: 0086-025-68035151