

ATF6B (S425) polyclonal antibody

Catalog: BS2131

Host: Rabbit

Reactivity: Human, Mouse, Rat

BackGround:

ATF-6 is a member of the basic-leucine zipper family of transcription factors. Endoplasmic reticulum stress causes cleavage of transmembrane ATF-6 and translocation of active ATF-6 to the nucleus. Soluble ATF-6 can exist as either an ATF-6 β homodimer or an ATF-6 α / β heterodimer. Binding of the ATF-6 β homodimer or ATF-6 α / β heterodimer to the nuclear transcription factor Y C (NF-YC) induces ER chaperone transcription.

Product:

Rabbit IgG, 1mg/ml in PBS with 0.02% sodium azide, 50% glycerol, pH7.2

Molecular Weight:

~ 90 kDa

Swiss-Prot:

Q99941

Purification&Purity:

The antibody was affinity-purified from rabbit antiserum by affinity-chromatography using epitope-specific immunogen and the purity is > 95% (by SDS-PAGE).

Applications:

WB: 1:500~1:1000

Storage&Stability:

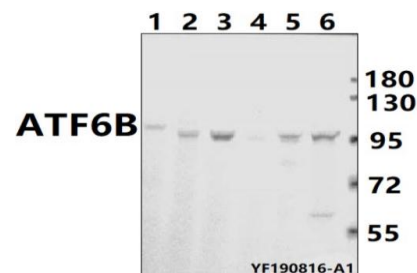
Store at 4 °C short term. Aliquot and store at -20 °C long

term. Avoid freeze-thaw cycles.

Specificity:

ATF6B (S425) polyclonal antibody detects endogenous levels of ATF6B protein.

DATA:



Western blot (WB) analysis of ATF6B pAb at 1:500 dilution

Lane1: The Embryo tissue lysate of Mouse(40ug)

Lane2: C6 whole cell lysate(40ug)

Lane3: CT-26 whole cell lysate(40ug)

Lane4: HEK293T whole cell lysate (40ug)

Lane5: DLD whole cell lysate(40ug)

Lane6: A2780 whole cell lysate(40ug)

Note:

For research use only, not for use in diagnostic procedure.

Bioworld Technology, Inc.

Add: 1660 South Highway 100, Suite 500 St. Louis Park, MN 55416, USA.

Email: info@bioworld.com

Tel: 6123263284

Fax: 6122933841

Bioworld technology, co. Ltd.

Add: No 9, weidi road Qixia District Nanjing, 210046, P. R. China.

Email: info@biogot.com

Tel: 0086-025-68037686

Fax: 0086-025-68035151