

Actinin- α 2/3 (Q58) polyclonal antibody

Catalog: BS1984

Host: Rabbit

Reactivity: Human, Mouse, Rat

Background:

The spectrin gene family encodes a diverse group of cytoskeletal proteins that include spectrins, dystrophins and α -actinins. There are four tissue-specific α -actinins, namely α -actinin-1, α -actinin-2, α -actinin-3 and α -actinin-4, which are localized to muscle and non-muscle cells, including skeletal, cardiac and smooth muscle cells, as well as within the cytoskeleton. Each α -actinin protein contains one Actin-binding domain, two calponin-homology domains, two EF-hand domains and four spectrin repeats, through which they function as bundling proteins that can cross-link F-Actin, thus anchoring Actin to a variety of intracellular structures. Defects in the gene encoding α -actinin-4 are the cause of focal segmental glomerulosclerosis 1 (FSGS1), a common renal lesion characterized by decreasing kidney function and, ultimately, renal failure.

Product:

Rabbit IgG, 1mg/ml in PBS with 0.02% sodium azide, 50% glycerol, pH7.2

Molecular Weight:

~ 103 kDa

Swiss-Prot:

P35609/Q08043

Purification&Purity:

The antibody was affinity-purified from rabbit antiserum by affinity-chromatography using epitope-specific immunogen and the purity is > 95% (by SDS-PAGE).

Applications:

WB: 1:500~1:1000

IHC: 1:50~1:200

IF: 1:50~1:200

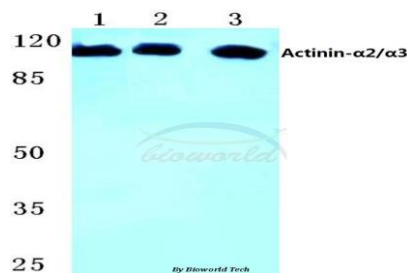
Storage&Stability:

Store at 4 °C short term. Aliquot and store at -20 °C long term. Avoid freeze-thaw cycles.

Specificity:

Actinin- α 2/3 (Q58) polyclonal antibody detects endogenous levels of actinin- α 2 and actinin- α 3 protein.

DATA:

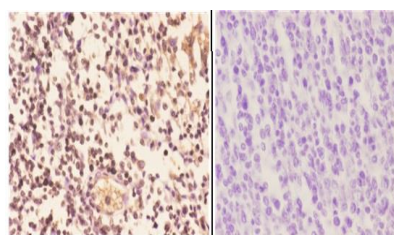


Western blot (WB) analysis of Actinin- α 2/3 (Q58) polyclonal antibody at 1:500 dilution

Lane1:Hela cell lysate

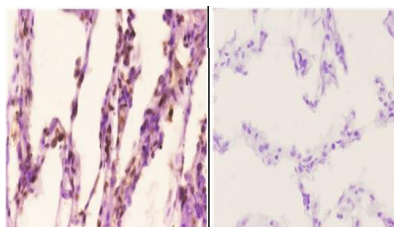
Lane2:Mouse kidney tissue lysate

Lane3:H9C2 cell lysate



BS1984
Lot C136131

Immunohistochemistry (IHC) analyzes of Actinin- α 2/3 (Q58) pAb in paraffin-embedded human tonsil carcinoma tissue at 1:50, showing Nucleus and Cytoplasm staining. Negative control (the right) Using PBS instead of primary antibody, secondary antibody is Goat Anti-Rabbit IgG-biotin followed by avidin-peroxidase.



BS1984
Lot C136131

Immunohistochemistry (IHC) analyzes of Actinin- α 2/3 (Q58) pAb in paraffin-embedded human lung carcinoma tissue at 1:50, showing Nu-

Bioworld Technology, Inc.

Add: 1660 South Highway 100, Suite 500 St. Louis Park, MN 55416, USA.

Email: info@bioworld.com

Tel: 6123263284

Fax: 6122933841

Bioworld technology, co. Ltd.

Add: No 9, weidi road Qixia District Nanjing, 210046, P. R. China.

Email: info@biogot.com

Tel: 0086-025-68037686

Fax: 0086-025-68035151



PRODUCT DATA SHEET

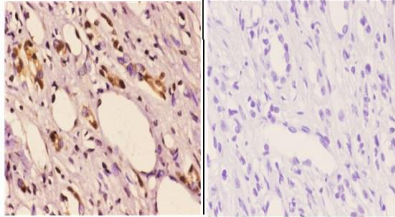
Bioworld Technology, Inc.

cleus and Cytoplasm staining. Negative control (the right) Using PBS instead of primary antibody, secondary antibody is Goat Anti-Rabbit IgG-biotin followed by avidin-peroxidase

IgG-biotin followed by avidin-peroxidase.

Note:

For research use only, not for use in diagnostic procedure.



BS1984
Lot C736131

Immunohistochemistry (IHC) analyzes of Actinin- α 2/3 (Q58) pAb in paraffin-embedded human kidney carcinoma tissue at 1:50. showing Nucleus and Cytoplasm staining. Negative control (the right) Using PBS instead of primary antibody, secondary antibody is Goat Anti-Rabbit

Bioworld Technology, Inc.

Add: 1660 South Highway 100, Suite 500 St. Louis Park, MN 55416, USA.

Email: info@bioworld.com

Tel: 6123263284

Fax: 6122933841

Bioworld technology, co. Ltd.

Add: No 9, weidi road Qixia District Nanjing, 210046, P. R. China.

Email: info@biogot.com

Tel: 0086-025-68037686

Fax: 0086-025-68035151