

## Catenin- $\beta$ (F660) polyclonal antibody

Catalog: BS1982

Host: Rabbit

Reactivity: Human, Mouse, Rat

### Background:

$\beta$ -Catenin is a key downstream effector in the Wnt signaling pathway. It is implicated in two major biological processes in vertebrates: early embryonic development and tumorigenesis. CK1 phosphorylates  $\beta$ -catenin at Ser45. This phosphorylation event primes  $\beta$ -catenin for subsequent phosphorylation by GSK-3 $\beta$ . GSK-3 $\beta$  destabilizes  $\beta$ -catenin by phosphorylating it at Ser33, Ser37, and Thr41. Mutations at these sites result in the stabilization of  $\beta$ -catenin protein levels and have been found in many tumor cell lines.

### Product:

Rabbit IgG, 1mg/ml in PBS with 0.02% sodium azide, 50% glycerol, pH7.2

### Molecular Weight:

~ 92 kDa

### Swiss-Prot:

P35222

### Purification&Purity:

The antibody was affinity-purified from rabbit antiserum by affinity-chromatography using epitope-specific immunogen and the purity is > 95% (by SDS-PAGE).

### Applications:

IHC: 1:50~1:200

IF: 1:50~1:200

### Storage&Stability:

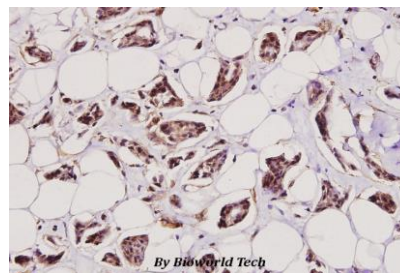
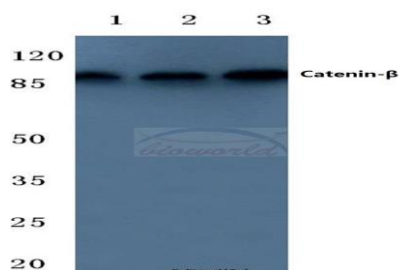
Store at 4 °C short term. Aliquot and store at -20 °C long

term. Avoid freeze-thaw cycles.

### Specificity:

Catenin- $\beta$  (F660) polyclonal antibody detects endogenous levels of Catenin- $\beta$  protein.

### DATA:



Immunohistochemistry (IHC) analyzes of Catenin- $\beta$  (F660) pAb in paraffin-embedded human breast carcinoma tissue at 1:100.

### Note:

For research use only, not for use in diagnostic procedure.

### Bioworld Technology, Inc.

Add: 1660 South Highway 100, Suite 500 St. Louis Park, MN 55416, USA.

Email: [info@bioworld.com](mailto:info@bioworld.com)

Tel: 6123263284

Fax: 6122933841

### Bioworld technology, co. Ltd.

Add: No 9, weidi road Qixia District Nanjing, 210046, P. R. China.

Email: [info@biogot.com](mailto:info@biogot.com)

Tel: 0086-025-68037686

Fax: 0086-025-68035151