

## GRK 2 (D635) polyclonal antibody

Catalog: BS1963

Host: Rabbit

Reactivity: Human, Mouse, Rat

### Background:

Heterotrimeric G protein-mediated signal transduction is a dynamically regulated process with the intensity of signal decreasing over time despite the continued presence of the agonist. This phenomenon, referred to as agonist-mediated desensitization, involves phosphorylation of the receptor by two classes of enzymes. The first are the second messenger-regulated kinases such as c-AMP dependent protein kinase A and protein kinase C. The second are the G protein-coupled receptor kinases (GRKs). At least seven members of the GRK family have been identified. These include rhodopsin kinase, GRK 1; two forms of  $\beta$ -adrenergic receptor kinase, GRK 2 ( $\beta$ ARK,  $\beta$ ARK1) and GRK 3 ( $\beta$ ARK2); IT-11 (GRK 4); GRK 5, GRK 6 and GRK 7. Phosphorylation of receptors by GRKs appears to be strictly dependent on the receptor being in its agonist-activated state.

### Product:

Rabbit IgG, 1mg/ml in PBS with 0.02% sodium azide, 50% glycerol, pH7.2

### Molecular Weight:

~ 80 kDa

### Swiss-Prot:

P25098

### Purification&Purity:

The antibody was affinity-purified from rabbit antiserum by affinity-chromatography using epitope-specific immunogen and the purity is > 95% (by SDS-PAGE).

### Applications:

WB: 1:500~1:1000

IHC: 1:50~1:200

IP: 1:10~1:100

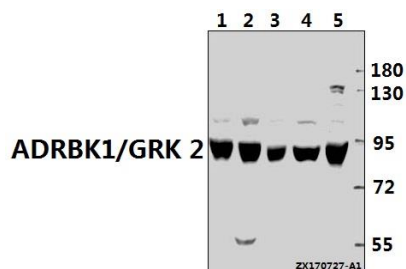
### Storage&Stability:

Store at 4 °C short term. Aliquot and store at -20 °C long term. Avoid freeze-thaw cycles.

### Specificity:

GRK 2 (D635) polyclonal antibody detects endogenous levels of GRK 2 protein.

### DATA:



Western blot (WB) analysis of GRK2 (D635) pAb at 1:500 dilution

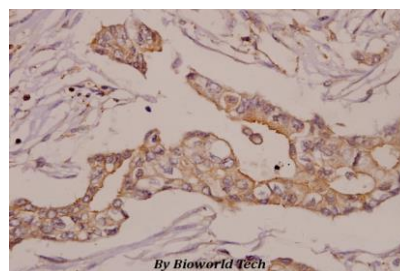
Lane1:MEF whole cell lysate(40ug)

Lane2:C6 whole cell lysate(40ug)

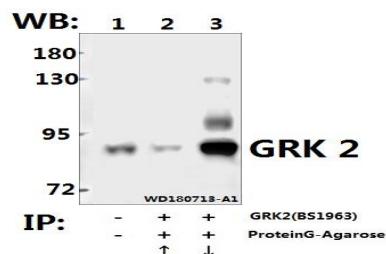
Lane3:MCF-7 whole cell lysate(40ug)

Lane4:PC3 whole cell lysate(40ug)

Lane5:K562 whole cell lysate(40ug)



Immunohistochemistry (IHC) analyzes of GRK 2 (D635) pAb in paraffin-embedded human breast carcinoma tissue at 1:50.



Immunoprecipitation of HEK293T cell lysate using ADRBK1/GRK2 (D635) pAb (Sepharose Bead Conjugate) #BD0048(lane 2 and lane 3). Lane 1 is 30% input. The western blot was probed using ADRBK1/GRK2 (D635) #BS1963. “↑” (supernatant) ; “↓”

### Bioworld Technology, Inc.

Add: 1660 South Highway 100, Suite 500 St. Louis Park, MN 55416, USA.

Email: [info@bioworld.com](mailto:info@bioworld.com)

Tel: 6123263284

Fax: 6122933841

### Bioworld technology, co. Ltd.

Add: No 9, weidi road Qixia District Nanjing, 210046, P. R. China.

Email: [info@biogot.com](mailto:info@biogot.com)

Tel: 0086-025-68037686

Fax: 0086-025-68035151



## PRODUCT DATA SHEET

Bioworld Technology, Inc.

(deposition)

For research use only, not for use in diagnostic procedure.

Note:

---

### Bioworld Technology, Inc.

Add: 1660 South Highway 100, Suite 500 St. Louis Park,  
MN 55416, USA.

Email: [info@bioworld.com](mailto:info@bioworld.com)

Tel: 6123263284

Fax: 6122933841

### Bioworld technology, co. Ltd.

Add: No 9, weidi road Qixia District Nanjing, 210046,  
P. R. China.

Email: [info@biogot.com](mailto:info@biogot.com)

Tel: 0086-025-68037686

Fax: 0086-025-68035151