

## ALX3 (R203) polyclonal antibody

Catalog: BS1898

Host: Rabbit

Reactivity: Human, Mouse, Rat

### Background:

Aristaless-related genes are a group of paired-related homeobox genes which play a role in regulating vertebrate embryogenesis. The homeodomain transcription factor aristaless-like 3 (ALX3) is expressed in mouse embryos from 8 days of gestation, predominantly in neural crest-derived mesenchyme and in lateral plate mesoderm. Expression analysis of human and mouse tissue reveals predominant ALX3 expression in brain tissue. The Alx3 gene maps to chromosome 1p23-p13 and encodes a 343 amino acid protein. Preferential methylation of Alx3 occurs in advanced-stage neuroblastoma and may repress ALX3 expression. Treatment with the methylation inhibitor 5-aza-2'-deoxycytidine restores ALX3 expression. Alx3 (-) mice lack a phenotype distinct from wild-type mice, however Alx3/Alx4 double mutants demonstrate severe craniofacial abnormalities not present in Alx4 single mutants. Specifically, Alx3/Alx4 double mutant newborn mice have cleft nasal regions in addition to malformation of other neural crest-derived skull structures.

### Product:

Rabbit IgG, 1mg/ml in PBS with 0.02% sodium azide, 50% glycerol, pH7.2

### Molecular Weight:

~ 36 kDa

### Swiss-Prot:

O95076

### Purification&Purity:

The antibody was affinity-purified from rabbit antiserum by affinity-chromatography using epitope-specific immunogen and the purity is > 95% (by SDS-PAGE).

### Applications:

WB: 1:500~1:1000

IHC: 1:50~1:200

IF: 1:50~1:200

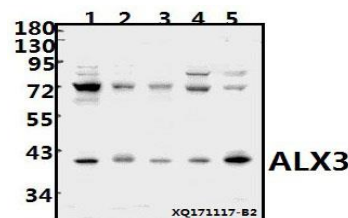
### Storage&Stability:

Store at 4 °C short term. Aliquot and store at -20 °C long term. Avoid freeze-thaw cycles.

### Specificity:

ALX3 (R203) polyclonal antibody detects endogenous levels of ALX3 protein.

### DATA:



Western blot (WB) analysis of ALX3 (R203) pAb at 1:1000 dilution

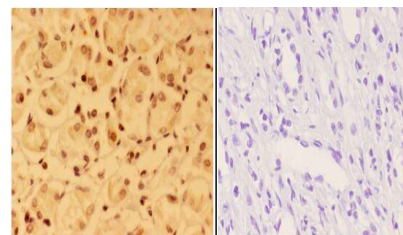
Lane1:HepG2 whole cell lysate(40ug)

Lane2:Hela whole cell lysate(40ug)

Lane3:MCF-7 whole cell lysate(40ug)

Lane4:PMVEC whole cell lysate(40ug)

Lane5:AML-12 whole cell lysate(40ug)



Immunohistochemistry (IHC) analyzes of ALX3 (R203) pAb in paraffin-embedded human kidney carcinoma tissue at 1:50, showing nucleus staining. Negative control (the right) Using PBS instead of primary antibody, secondary antibody is Goat Anti-Rabbit IgG-biotin followed by avidin-peroxidase.

### Note:

For research use only, not for use in diagnostic procedure.

### Bioworld Technology, Inc.

Add: 1660 South Highway 100, Suite 500 St. Louis Park, MN 55416, USA.

Email: [info@bioworld.com](mailto:info@bioworld.com)

Tel: 6123263284

Fax: 6122933841

### Bioworld technology, co. Ltd.

Add: No 9, weidi road Qixia District Nanjing, 210046, P. R. China.

Email: [info@biogot.com](mailto:info@biogot.com)

Tel: 0086-025-68037686

Fax: 0086-025-68035151



## PRODUCT DATA SHEET

Bioworld Technology, Inc.

---

---

### **Bioworld Technology, Inc.**

**Add:** 1660 South Highway 100, Suite 500 St. Louis Park,  
MN 55416, USA.

**Email:** [info@bioworld.com](mailto:info@bioworld.com)

**Tel:** 6123263284

**Fax:** 6122933841

### **Bioworld technology, co. Ltd.**

**Add:** No 9, weidi road Qixia District Nanjing, 210046,  
P. R. China.

**Email:** [info@biogot.com](mailto:info@biogot.com)

**Tel:** 0086-025-68037686

**Fax:** 0086-025-68035151