

## Cytokeratin 8 (G427) polyclonal antibody

Catalog: BS1545

Host: Rabbit

Reactivity: Human, Mouse, Rat

### BackGround:

Cytokeratin 8 belongs to the type B (basic) subfamily of high molecular weight keratins and exists in combination with cytokeratin 18. Cytokeratin 8 is primarily found in the non squamous epithelia and is present in majority of adenocarcinomas and ductal carcinomas. It is absent in squamous cell carcinomas. Hepatocellular carcinomas are defined by the use of antibodies that recognize only cytokeratin polypeptides 8 and 18.

### Product:

Rabbit IgG, 1mg/ml in PBS with 0.02% sodium azide, 50% glycerol, pH7.2

### Molecular Weight:

~ 55 kDa

### Swiss-Prot:

P05787

### Purification&Purity:

The antibody was affinity-purified from rabbit antiserum by affinity-chromatography using epitope-specific immunogen and the purity is > 95% (by SDS-PAGE).

### Applications:

WB: 1:500~1:1000

IHC: 1:50~1:200

IF: 1:50~1:200

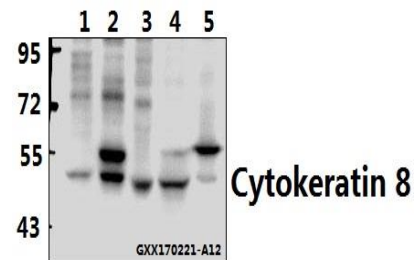
### Storage&Stability:

Store at 4 °C short term. Aliquot and store at -20 °C long term. Avoid freeze-thaw cycles.

### Specificity:

K8 (G427) polyclonal antibody detects endogenous levels of K8 protein.

### DATA:



Western blot (WB) analysis of Cytokeratin 8 (G427) polyclonal antibody at 1:500 dilution

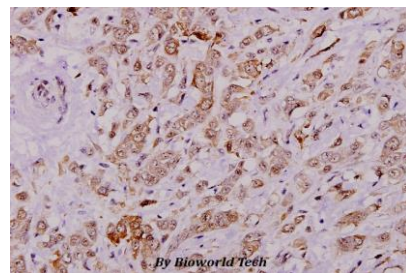
Lane1:Jurkat whole cell lysate(40ug)

Lane2:K562 whole cell lysate(20ug)

Lane3:NIH-3T3 whole cell lysate(40ug)

Lane4:The Liver tissue lysate of Rat(40ug)

Lane5:PC12 whole cell lysate(40ug)



Immunohistochemistry (IHC) analyzes of Cytokeratin 8 (G427) pAb in paraffin-embedded human breast carcinoma tissue at 1:100.

### Note:

For research use only, not for use in diagnostic procedure.

### Bioworld Technology, Inc.

Add: 1660 South Highway 100, Suite 500 St. Louis Park, MN 55416, USA.

Email: [info@bioworld.com](mailto:info@bioworld.com)

Tel: 6123263284

Fax: 6122933841

### Bioworld technology, co. Ltd.

Add: No 9, weidi road Qixia District Nanjing, 210046, P. R. China.

Email: [info@biogot.com](mailto:info@biogot.com)

Tel: 0086-025-68037686

Fax: 0086-025-68035151