

Actin- α/γ (Q49) polyclonal antibody

Catalog: BS1500

Host: Rabbit

Reactivity: Human, Mouse, Rat

BackGround:

Beta actin is one of six different actin isoforms which have been identified. Actins are highly conserved proteins that are involved in cell motility, structure and integrity. Be aware when using beta actin antibodies as loading controls that although beta actin is normally the best protein to use as a loading control, under some conditions its amounts can vary between samples. In particular, expression of actin in adipose tissue is very low (Spiegelman and Farmer, Cell, 1982, 29(1):53-60) "in cells undergoing adipose differentiation actin synthesis decreases by 90%".

Product:

Rabbit IgG, 1mg/ml in PBS with 0.02% sodium azide, 50% glycerol, pH7.2

Molecular Weight:

~ 45 kDa

Swiss-Prot:

P68032/P63261/P63267/P68133

Purification&Purity:

The antibody was affinity-purified from rabbit antiserum by affinity-chromatography using epitope-specific immunogen and the purity is > 95% (by SDS-PAGE).

Applications:

WB: 1:500~1:1000

IHC: 1:50~1:200

IF: 1:50~1:200

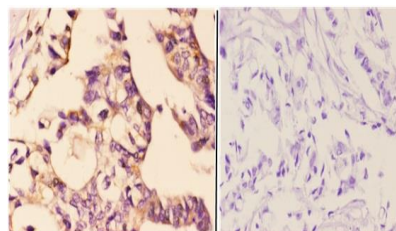
Storage&Stability:

Store at 4 °C short term. Aliquot and store at -20 °C long term. Avoid freeze-thaw cycles.

Specificity:

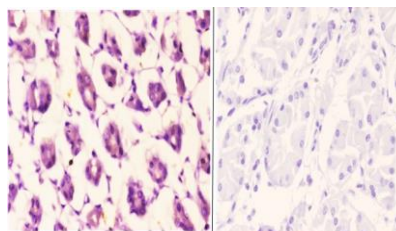
Actin- α/γ (Q49) polyclonal antibody detects endogenous levels of Actin- α/γ protein.

DATA:



BS1500
Lot CA36131

Immunohistochemistry (IHC) analyzes of Actin- α/γ (Q49) pAb in paraffin-embedded human breast carcinoma tissue at 1:50. showing Cytoplasm and Cytoskeletal staining. Negative control (the right) Using PBS instead of primary antibody, secondary antibody is Goat Anti-Rabbit IgG-biotin followed by avidin-peroxidase.



BS1500
Lot CA36131

Immunohistochemistry (IHC) analyzes of Actin- α/γ (Q49) pAb in paraffin-embedded human stomach carcinoma tissue at 1:50. showing Cytoplasm and cytoskeletal staining. Negative control (the right) Using PBS instead of primary antibody, secondary antibody is Goat Anti-Rabbit IgG-biotin followed by avidin-peroxidase.

Note:

For research use only, not for use in diagnostic procedure.

Bioworld Technology, Inc.

Add: 1660 South Highway 100, Suite 500 St. Louis Park, MN 55416, USA.

Email: info@bioworld.com

Tel: 6123263284

Fax: 6122933841

Bioworld technology, co. Ltd.

Add: No 9, weidi road Qixia District Nanjing, 210046, P. R. China.

Email: info@biogot.com

Tel: 0086-025-68037686

Fax: 0086-025-68035151