

PRODUCT DATA SHEET



Bioworld Technology, Inc.

Rad17 (A639) Antibody

Cat No.: BS1421

Host: Rabbit

Reactivity: Human, Mouse

BACKGROUND

DNA damage results in the arrest of cell cycle progression, allowing the damaged DNA to be repaired prior to replication. Checkpoints exist at several cell cycle phase transitions to maintain this genetic integrity. Rad9, Rad17, Rad24 and Mec3 are involved in activating the G1 and G2 checkpoints. Pol2 (also known as Dun2), encoding the catalytic subunit of DNA polymerase epsilon, plays a role in activating the S phase checkpoint. The protein kinase Rad53 (also designated Spk1, Mec2 or Sad1) is essential for both G2 and S phase arrest. Activation of Rad53 is regulated by Mec1 (also known as Esr1 and Sad3), a homolog of the human ATM protein. Pds1 and Mad2 both regulate checkpoints associated with incomplete spindle replication. Dun1, another protein kinase, plays a role in transducing the DNA damage signal.

PRODUCT

1 mg/ml in Phosphate buffered saline (PBS) with 15 mM sodium azide, approx. pH 7.2.

PURIFICATION & PURITY

The antibody was affinity-purified from rabbit antiserum by affinity-chromatography using epitope-specific immunogen and the purity is > 95% (by SDS-PAGE).

APPLICATIONS

WB: 1:500 ~ 1:1000

IHC: 1:50 ~ 1:200

IF: 1:50 ~ 1:200 (Recommended Dilutions)

STORAGE & STABILITY

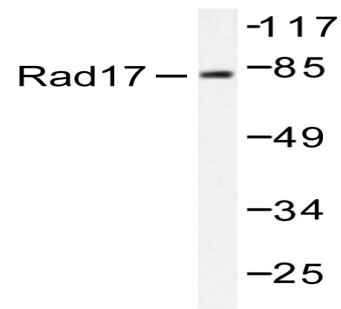
Store at 4°C short term. Aliquot and store at -20°C long term.

Avoid freeze-thaw cycles.

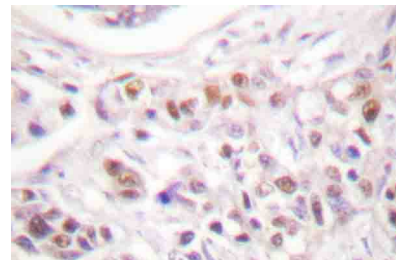
SPECIFICITY

Rad17 (A639) antibody detects endogenous levels of Rad17 protein.

DATA



Western blot (WB) analysis of Rad17 (A639) antibody in extracts from A549 HuvEc cells.



Immunohistochemistry (IHC) analyzes of Rad17 (A639) antibody in paraffin-embedded human breast carcinoma tissue.

RESEARCH USE

For research use only, not for use in diagnostic procedures.

Bioworld Technology, Inc.

1660 South Highway 100, Suite 500 St. Louis Park, MN 55416, USA. Tel: 6123263284
www.bioworld.com Orders: order@bioworld.com Support: support@bioworld.com