

## Lyn (T501) polyclonal antibody

Catalog: BS1410

Host: Rabbit

Reactivity: Human, Mouse, Rat

### BackGround:

Src is the human homolog of the v-Src gene of the Rous sarcoma virus, also known as avian sarcoma virus or ASV. Src is the first proto-oncogenic non-receptor tyrosine kinase characterized in human. By virtue of common structural motifs, the Src family is composed of nine members in vertebrates, including Src, Yes, Fgr, Frk, Fyn, Lyn, Hck, Lck and Blk. Src-family kinases transduce signals that are involved in the control of a variety of cellular processes, including proliferation, differentiation, motility and adhesion. Src-family kinases contain an amino-terminal cell membrane anchor followed by an SH3 domain and an SH2 domain involved in modular association and activation, respectively. Src-family kinases are normally maintained in an inactive state and can be activated transiently during cellular events such as mitosis. The human Lyn gene maps to chromosome 8q13 and encodes a 505 amino acid protein. Hematopoietic tissues predominantly express Lyn, which influences normal immunoglobulin production and regulation

### Product:

Rabbit IgG, 1mg/ml in PBS with 0.02% sodium azide, 50% glycerol, pH7.2

### Molecular Weight:

~ 50,58 kDa

### Swiss-Prot:

P07948

### Purification&Purity:

The antibody was affinity-purified from rabbit antiserum by affinity-chromatography using epitope-specific immunogen and the purity is > 95% (by SDS-PAGE).

### Applications:

WB: 1:500~1:1000

IHC: 1:50~1:200

### Storage&Stability:

Store at 4 °C short term. Aliquot and store at -20 °C long term. Avoid freeze-thaw cycles.

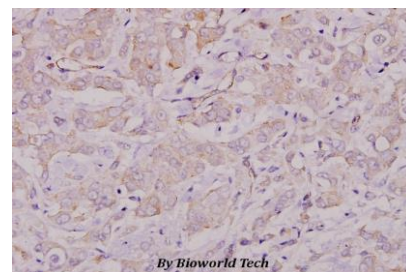
### Specificity:

Lyn (T501) polyclonal antibody detects endogenous levels of Lyn protein.

### DATA:



Western blot (WB) analysis of Lyn (T501) polyclonal antibody in extracts from PC12 cells.



Immunohistochemistry (IHC) analyzes of Lyn (T501) pAb in paraffin-embedded human breast carcinoma tissue at 1:100.

### Note:

For research use only, not for use in diagnostic procedure.

### Bioworld Technology, Inc.

Add: 1660 South Highway 100, Suite 500 St. Louis Park, MN 55416, USA.

Email: [info@bioworld.com](mailto:info@bioworld.com)

Tel: 6123263284

Fax: 6122933841

### Bioworld technology, co. Ltd.

Add: No 9, weidi road Qixia District Nanjing, 210046, P. R. China.

Email: [info@biogot.com](mailto:info@biogot.com)

Tel: 0086-025-68037686

Fax: 0086-025-68035151