

## S100 $\alpha$ (A18) polyclonal antibody

Catalog: BS1318

Host: Rabbit

Reactivity: Human, Mouse, Rat

### BackGround:

The family of EF-hand type Ca<sup>2+</sup>-binding proteins includes calbindin (previously designated vitamin D-dependent Ca<sup>2+</sup>-binding protein), S-100  $\alpha$  and  $\beta$ , calgranulins A (also designated MRP8), B (also designated MRP14) and C (S-100 like proteins), and the parvalbumin family members, including parvalbumin  $\alpha$  and parvalbumin  $\beta$  (also designated oncomodulin). The S-100 protein is involved in the regulation of cellular processes such as cell cycle progression and differentiation. Research also indicates that the S-100 protein may function in the activation of Ca<sup>2+</sup> induced Ca<sup>2+</sup> release, inhibition of microtubule assembly and inhibition of protein kinase C mediated phosphorylation. Two S-100 subunits, sharing 60% sequence identity, have been described as S-100 $\alpha$  chain and S-100 $\beta$  chain. Three S-100 dimeric forms have been characterized, differing in their subunit composition of either two  $\alpha$  chains, two  $\beta$  chains or one  $\alpha$  and one  $\beta$  chain.

### Product:

Rabbit IgG, 1mg/ml in PBS with 0.02% sodium azide, 50% glycerol, pH7.2

### Molecular Weight:

~ 10 kDa

### Swiss-Prot:

P23297

### Purification&Purity:

The antibody was affinity-purified from rabbit antiserum by affinity-chromatography using epitope-specific immunogen and the purity is > 95% (by SDS-PAGE).

### Applications:

IHC: 1:50~1:200

IF: 1:50~1:200

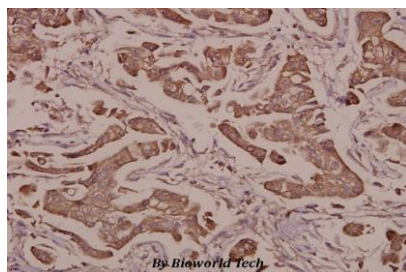
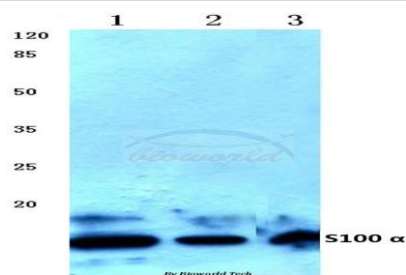
### Storage&Stability:

Store at 4 °C short term. Aliquot and store at -20 °C long term. Avoid freeze-thaw cycles.

### Specificity:

S100  $\alpha$  (A18) polyclonal antibody detects endogenous levels of S100 A1 protein.

### DATA:



Immunohistochemistry (IHC) analyzes of S100  $\alpha$  (A18) pAb in paraffin-embedded human breast carcinoma tissue at 1:50.

### Note:

For research use only, not for use in diagnostic procedure.

### Bioworld Technology, Inc.

Add: 1660 South Highway 100, Suite 500 St. Louis Park, MN 55416, USA.

Email: [info@bioworld.com](mailto:info@bioworld.com)

Tel: 6123263284

Fax: 6122933841

### Bioworld technology, co. Ltd.

Add: No 9, weidi road Qixia District Nanjing, 210046, P. R. China.

Email: [info@biogot.com](mailto:info@biogot.com)

Tel: 0086-025-68037686

Fax: 0086-025-68035151