

UCHL1 (R202) polyclonal antibody

Catalog: BS1293

Host: Rabbit

Reactivity: Human, Mouse, Rat

BackGround:

UCHL1 is a single chain transmembrane glycoprotein which represents the low molecular weight isoform of the Leucocyte Common Antigen (LCA). It is expressed on most thymocytes, about 45% of peripheral blood T cells, virtually all T cells in skin reactive infiltrates, and the majority of T cell malignancies. It is also found on a subset of B cells and on exceptional B cell lymphomas.

Product:

Rabbit IgG, 1mg/ml in PBS with 0.02% sodium azide, 50% glycerol, pH7.2

Molecular Weight:

~ 25 kDa

Swiss-Prot:

P09936

Purification&Purity:

The antibody was affinity-purified from rabbit antiserum by affinity-chromatography using epitope-specific immunogen and the purity is > 95% (by SDS-PAGE).

Applications:

WB: 1:500~1:1000

IHC: 1:50~1:200

IP: 1:50~1:200

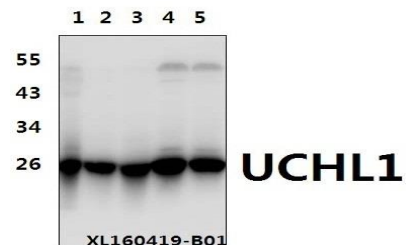
Storage&Stability:

Store at 4 °C short term. Aliquot and store at -20 °C long term. Avoid freeze-thaw cycles.

Specificity:

PGP9.5 (R202) polyclonal antibody detects endogenous levels of PGP9.5 protein.

DATA:



Western blot (WB) analysis of UCHL1 (R202) polyclonal antibody at 1:500 dilution

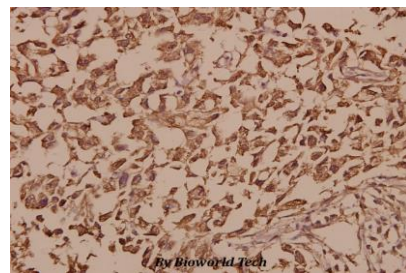
Lane1:Hela whole cell lysate(40ug)

Lane2:C6 whole cell lysate(40ug)

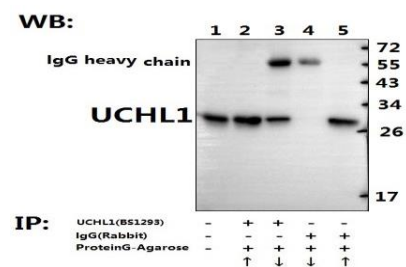
Lane3:HEK293T whole cell lysate(40ug)

Lane4:The Brain tissue lysate of Rat(40ug)

Lane5:The Brain tissue lysate of Mouse(40ug)



Immunohistochemistry (IHC) analyzes of UCHL1 (R202) pAb in paraffin-embedded human breast carcinoma tissue at 1:50.



Immunoprecipitation of the Testis tissue lysate of Rat using UCHL1 (R202) pAb (Sepharose Bead Conjugate) #BD0047(lane 2 and lane 3) and Nonspecific IgG Control (Sepharose Bead Conjugate)#BD0047 (lane 4 and lane 5) .Lane 1 is 30% input. The western blot was probed using UCHL1(R202) pAb #BS1293. “ ↑ ” (supernatant); “ ↓ ” (deposition)

Bioworld Technology, Inc.

Add: 1660 South Highway 100, Suite 500 St. Louis Park, MN 55416, USA.

Email: info@bioworld.com

Tel: 6123263284

Fax: 6122933841

Bioworld technology, co. Ltd.

Add: No 9, weidi road Qixia District Nanjing, 210046, P. R. China.

Email: info@biogot.com

Tel: 0086-025-68037686

Fax: 0086-025-68035151



PRODUCT DATA SHEET

Bioworld Technology, Inc.

Note:

For research use only, not for use in diagnostic procedure.

Bioworld Technology, Inc.

Add: 1660 South Highway 100, Suite 500 St. Louis Park,
MN 55416, USA.

Email: info@bioworld.com

Tel: 6123263284

Fax: 6122933841

Bioworld technology, co. Ltd.

Add: No 9, weidi road Qixia District Nanjing, 210046,
P. R. China.

Email: info@biogot.com

Tel: 0086-025-68037686

Fax: 0086-025-68035151