

PCNA (I88) polyclonal antibody

Catalog: BS1289

Host: Rabbit

Reactivity: Human, Mouse, Rat

BackGround:

The proliferating cell nuclear antigen (PCNA), a protein synthesized in early G1 and S phases of the cell cycle, functions in cell cycle progression, DNA replication, and DNA repair. In early S phase, PCNA exhibits granular distribution and is absent from the nucleoli, however, in late S phase, it relocates to the nucleoli. PCNA exists in two basic forms, one involved in ongoing DNA replication, which localizes specifically to the nucleus, and a second, soluble form, not implicated in constant synthesis. Interestingly, the latter form degrades in the presence of organic solvents, rendering it undetectable by histological methods in tissues using organic fixatives, and thus also providing a method of visualizing only the synthesizing form.

Product:

Rabbit IgG, 1mg/ml in PBS with 0.02% sodium azide, 50% glycerol, pH7.2

Molecular Weight:

~ 34 kDa

Swiss-Prot:

P12004

Purification&Purity:

The antibody was affinity-purified from rabbit antiserum by affinity-chromatography using epitope-specific immunogen and the purity is > 95% (by SDS-PAGE).

Applications:

WB: 1:500~1:1000

IHC: 1:50~1:200

IP: 1:50~1:200

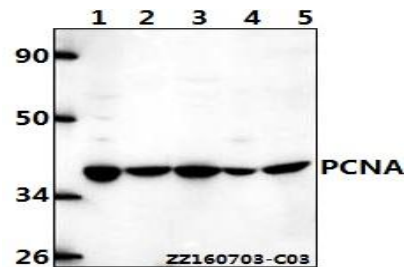
Storage&Stability:

Store at 4 °C short term. Aliquot and store at -20 °C long term. Avoid freeze-thaw cycles.

Specificity:

PCNA (I88) polyclonal antibody detects endogenous levels of PCNA protein.

DATA:



Western blot (WB) analysis of PCNA (I88) polyclonal antibody at 1:1000 dilution

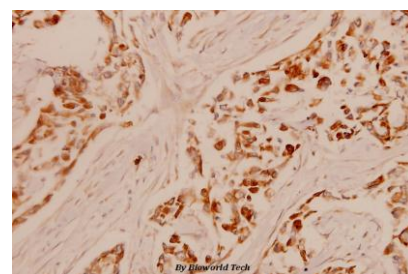
Lane1:A549 whole cell lysate(40ug)

Lane2:Hela whole cell lysate(40ug)

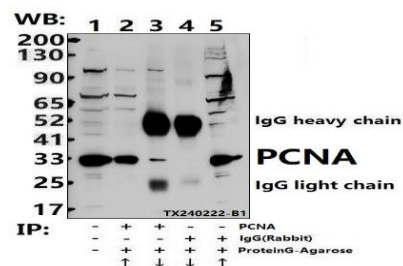
Lane3:HEK293T whole cell lysate(40ug)

Lane4:H9C2 whole cell lysate(40ug)

Lane5:BV2 whole cell lysate(40ug)



Immunohistochemistry (IHC) analyzes of PCNA (I88) pAb in paraffin-embedded human breast carcinoma tissue at 1:100.



Immunoprecipitation of HeLa cell lysates using PCNA pAb (Sepharose Bead Conjugate)#BD0048 (lane 2 and lane 3) and Nonspecific IgG Control (Sepharose Bead Conjugate)#BD0048 (lane 4 and lane 5). Lane 1 is 30% input. The western blot was probed using PCNA pAb.

Note:

Bioworld Technology, Inc.

Add: 1660 South Highway 100, Suite 500 St. Louis Park, MN 55416, USA.

Email: info@bioworld.com

Tel: 6123263284

Fax: 6122933841

Bioworld technology, co. Ltd.

Add: No 9, weidi road Qixia District Nanjing, 210046, P. R. China.

Email: info@biogot.com

Tel: 0086-025-68037686

Fax: 0086-025-68035151



PRODUCT DATA SHEET

Bioworld Technology, Inc.

For research use only, not for use in diagnostic procedure.

Bioworld Technology, Inc.

Add: 1660 South Highway 100, Suite 500 St. Louis Park,
MN 55416, USA.

Email: info@bioworld.com

Tel: 6123263284

Fax: 6122933841

Bioworld technology, co. Ltd.

Add: No 9, weidi road Qixia District Nanjing, 210046,
P. R. China.

Email: info@biogot.com

Tel: 0086-025-68037686

Fax: 0086-025-68035151