

## Patched (A2) polyclonal antibody

Catalog: BS1286

Host: Rabbit

Reactivity: Human, Mouse, Rat

### Background:

PTCH (Patched protein homolog 1) is a receptor for sonic hedgehog (SHH), indian hedgehog (IHH) and desert hedgehog (DHH). PTCH associates with the smoothed protein (SMO) to transduce the hedgehog's proteins signal. PTCH has a tumor suppressor function, as inactivation of this protein is probably a necessary, if not sufficient step for tumorigenesis. PTCH is expressed in the adult brain, lung, liver, heart, placenta, skeletal muscle, pancreas and kidney. It is also expressed in tumor cells but not in normal skin. During development PTCH is found in all major target tissues of sonic hedgehog, such as the ventral neural tube, somites, and tissues surrounding the zone of polarizing activity of the limb bud.

Defects in PTCH are probably the cause of basal cell nevus syndrome also known as Gorlin syndrome or Gorlin-Goltz syndrome

### Product:

Rabbit IgG, 1mg/ml in PBS with 0.02% sodium azide, 50% glycerol, pH7.2

### Molecular Weight:

~ 160 kDa

### Swiss-Prot:

Q13635

### Purification&Purity:

The antibody was affinity-purified from rabbit antiserum by affinity-chromatography using epitope-specific immunogen and the purity is > 95% (by SDS-PAGE).

### Applications:

WB: 1:500~1:1000

IHC: 1:50~1:200

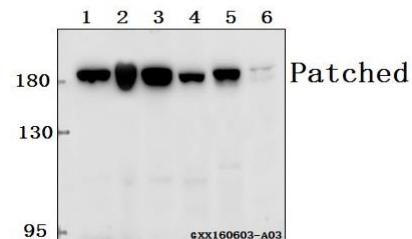
### Storage&Stability:

Store at 4 °C short term. Aliquot and store at -20 °C long term. Avoid freeze-thaw cycles.

### Specificity:

Patched (A2) polyclonal antibody detects endogenous levels of Patched protein.

### DATA:



Western blot (WB) analysis of Patched (A2) polyclonal antibody at 1:500 dilution

Lane1:HCT116 whole cell lysate(40ug)

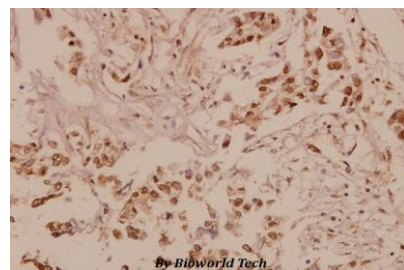
Lane2:PC3 whole cell lysate(40ug)

Lane3:SGC7901 whole cell lysate(40ug)

Lane4:HEK293T whole cell lysate(40ug)

Lane5:The Testis tissue lysate of Mouse(40ug)

Lane6:The Testis tissue lysate of Rat(40ug)



Immunohistochemistry (IHC) analyzes of Patched (A2) pAb in paraffin-embedded human breast carcinoma tissue at 1:50.

### Note:

For research use only, not for use in diagnostic procedure.

### Bioworld Technology, Inc.

Add: 1660 South Highway 100, Suite 500 St. Louis Park, MN 55416, USA.

Email: [info@bioworld.com](mailto:info@bioworld.com)

Tel: 6123263284

Fax: 6122933841

### Bioworld technology, co. Ltd.

Add: No 9, weidi road Qixia District Nanjing, 210046, P. R. China.

Email: [info@biogot.com](mailto:info@biogot.com)

Tel: 0086-025-68037686

Fax: 0086-025-68035151