

## p21 (G139) polyclonal antibody

Catalog: BS1269

Host: Rabbit

Reactivity: Human, Mouse, Rat

### BackGround:

It is now well established that cyclins play a positive role in promoting cell cycle transitions via their ability to associate with and activate their cognate cyclin-dependent kinases (Cdks). Cdk2 associates with cyclins A, D and E, and has been implicated in the control of the G1 to S phase transition in mammals. A novel Cdk-interacting protein, designated p21, Cip1 or WAF1, has been identified in cyclin A, cyclin D1, cyclin E and Cdk2 immunoprecipitates. p21 is a potent, tight-binding inhibitor of Cdks and can inhibit the phosphorylation of Rb by cyclin A-Cdk 2, cyclin E-Cdk2, cyclin D1-Cdk4 and cyclin D2-Cdk4 complexes. Expression of p21 is inducible by wildtype, but not mutant, p53. The mouse homolog of p21 is designated CAP20.

### Product:

Rabbit IgG, 1mg/ml in PBS with 0.02% sodium azide, 50% glycerol, pH7.2

### Molecular Weight:

~ 21 kDa

### Swiss-Prot:

P38936

### Purification&Purity:

The antibody was affinity-purified from rabbit antiserum by affinity-chromatography using epitope-specific immunogen and the purity is > 95% (by SDS-PAGE).

### Applications:

WB: 1:500~1:1000

### Storage&Stability:

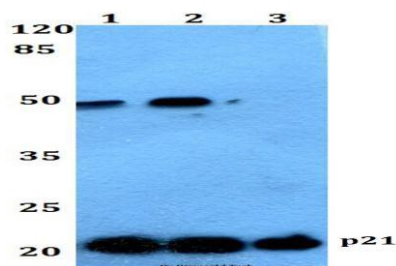
Store at 4 °C short term. Aliquot and store at -20 °C long

term. Avoid freeze-thaw cycles.

### Specificity:

p21 Cip1 (G139) polyclonal antibody detects endogenous levels of p21 Cip1 protein.

### DATA:

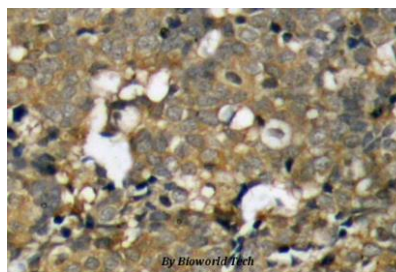


Western blot (WB) analysis of p21 (G139) polyclonal antibody at 1:500 dilution

Lane1:HEK293T whole cell lysate

Lane2:NIH-3T3 whole cell lysate

Lane3:PC12 whole cell lysate



### Note:

For research use only, not for use in diagnostic procedure.

### Bioworld Technology, Inc.

Add: 1660 South Highway 100, Suite 500 St. Louis Park, MN 55416, USA.

Email: [info@bioworld.com](mailto:info@bioworld.com)

Tel: 6123263284

Fax: 6122933841

### Bioworld technology, co. Ltd.

Add: No 9, weidi road Qixia District Nanjing, 210046, P. R. China.

Email: [info@biogot.com](mailto:info@biogot.com)

Tel: 0086-025-68037686

Fax: 0086-025-68035151