

MEK-6 (S201) polyclonal antibody

Catalog: BS1228

Host: Rabbit

Reactivity: Human, Mouse, Rat

BackGround:

Mitogen activated protein kinase kinase 6 (MEK6 or MKK6) belongs to the serine/threonine protein kinase family and the MAPK kinase subfamily (MAP2K, MKK or MEKs). MEK6, closely related to MEK3, catalyzes the concomitant phosphorylation of a threonine and a tyrosine residue in MAP kinase p38, thus activating it, in response to inflammatory cytokines and environmental stress

Product:

Rabbit IgG, 1mg/ml in PBS with 0.02% sodium azide, 50% glycerol, pH7.2

Molecular Weight:

~ 37 kDa

Swiss-Prot:

P52564

Purification&Purity:

The antibody was affinity-purified from rabbit antiserum by affinity-chromatography using epitope-specific immunogen and the purity is > 95% (by SDS-PAGE).

Applications:

WB: 1:500~1:1000

IHC: 1:50~1:200

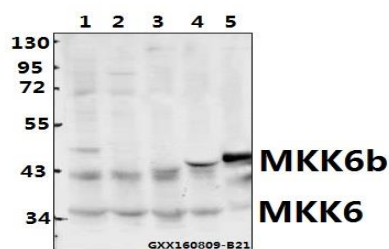
Storage&Stability:

Store at 4 °C short term. Aliquot and store at -20 °C long term. Avoid freeze-thaw cycles.

Specificity:

MEK-6 (S201) polyclonal antibody detects endogenous levels of MEK-6 protein.

DATA:



Western blot (WB) analysis of MEK-6 (S201) polyclonal antibody at 1:500 dilution

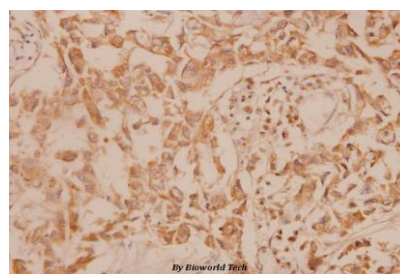
Lane1:L02 whole cell lysate(40ug)

Lane2:Panc1 whole cell lysate(40ug)

Lane3:CT26 whole cell lysate(40ug)

Lane4:The Heart tissue lysate of Rat(40ug)

Lane5:The Muscle tissue lysate of Mouse(40ug)



Immunohistochemistry (IHC) analyzes of MEK-6 (S201) pAb in paraffin-embedded human breast carcinoma tissue at 1:100.

Note:

For research use only, not for use in diagnostic procedure.

Bioworld Technology, Inc.

Add: 1660 South Highway 100, Suite 500 St. Louis Park, MN 55416, USA.

Email: info@bioworld.com

Tel: 6123263284

Fax: 6122933841

Bioworld technology, co. Ltd.

Add: No 9, weidi road Qixia District Nanjing, 210046, P. R. China.

Email: info@biogot.com

Tel: 0086-025-68037686

Fax: 0086-025-68035151