

## LIMK1/2 (D402) polyclonal antibody

Catalog: BS1215

Host: Rabbit

Reactivity: Human, Mouse, Rat

### BackGround:

Proteins containing LIM motifs are typically involved in cell fate determination and growth control. A family of proteins designated LIM kinases, including LIMK-1 and LIMK-2, has been identified. LIMK-1 has been shown to regulate the stabilization of F-Actin structures and cofilin activity, indicating that LIMK-1 plays a role in a signaling pathway involved in the regulation of cell motility and morphogenesis. LIMK-1 inhibits neuronal differentiation of PC12 cells, and is thought to act by interfering with events downstream of MAPK activation. Expression patterns of LIMK-1 and LIMK-2 suggest that these proteins may have different functions during development. A truncated form of LIMK-2 has been identified in adult testis that is thought to arise from an alternative initiation exon.

### Product:

Rabbit IgG, 1mg/ml in PBS with 0.02% sodium azide, 50% glycerol, pH7.2

### Molecular Weight:

~ 72 kDa

### Swiss-Prot:

P53667/P53671

### Purification&Purity:

The antibody was affinity-purified from rabbit antiserum by affinity-chromatography using epitope-specific immunogen and the purity is > 95% (by SDS-PAGE).

### Applications:

WB: 1:500~1:1000

IHC: 1:50~1:200

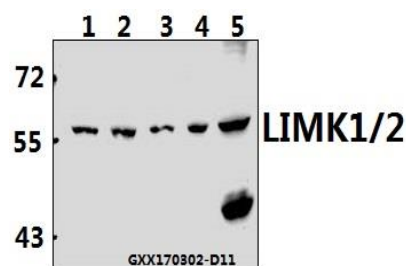
### Storage&Stability:

Store at 4 °C short term. Aliquot and store at -20 °C long term. Avoid freeze-thaw cycles.

### Specificity:

LIMK1/2 (D402) polyclonal antibody detects endogenous levels of LIMK1 and LIMK 2 protein.

### DATA:



Western blot (WB) analysis of LIMK1/2 (D402) polyclonal antibody at 1:500 dilution

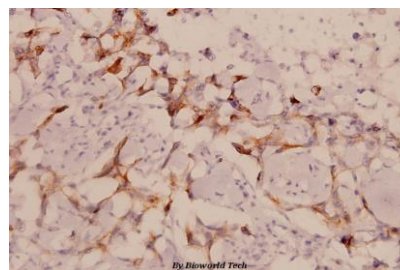
Lane1:HEK293T whole cell lysate(40ug)

Lane2:Panc1 whole cell lysate(40ug)

Lane3:A549 whole cell lysate(40ug)

Lane4:PC12 whole cell lysate(40ug)

Lane5:AML-12 whole cell lysate(40ug)



Immunohistochemistry (IHC) analyzes of LIMK1/2 (D402) pAb in paraffin-embedded human breast carcinoma tissue at 1:100.

### Note:

For research use only, not for use in diagnostic procedure.

### Bioworld Technology, Inc.

Add: 1660 South Highway 100, Suite 500 St. Louis Park, MN 55416, USA.

Email: [info@bioworld.com](mailto:info@bioworld.com)

Tel: 6123263284

Fax: 6122933841

### Bioworld technology, co. Ltd.

Add: No 9, weidi road Qixia District Nanjing, 210046, P. R. China.

Email: [info@biogot.com](mailto:info@biogot.com)

Tel: 0086-025-68037686

Fax: 0086-025-68035151