

Cytokeratin 7 (L451) polyclonal antibody

Catalog: BS1209

Host: Rabbit

Reactivity: Human, Mouse, Rat

Background:

Cytokeratins are useful markers of tissue differentiation and, in addition, they aid in the characterization of malignant tumors. Cytokeratin 7 (also known as sarcolectin) agglutinates normal and transformed cells with a high affinity for simple sugars. Cytokeratin 7 also inhibits the synthesis of interferon-dependent secondary proteins thus reversing the antiviral effect of interferon induction and restoring cells to their status ad primum. In normal and transformed cells, Cytokeratin 7 localizes to the membrane.

Product:

Rabbit IgG, 1mg/ml in PBS with 0.02% sodium azide, 50% glycerol, pH7.2

Molecular Weight:

~ 51 kDa

Swiss-Prot:

P08729

Purification&Purity:

The antibody was affinity-purified from rabbit antiserum by affinity-chromatography using epitope-specific immunogen and the purity is > 95% (by SDS-PAGE).

Applications:

WB: 1:500~1:1000

IHC: 1:50~1:200

IF: 1:50~1:200

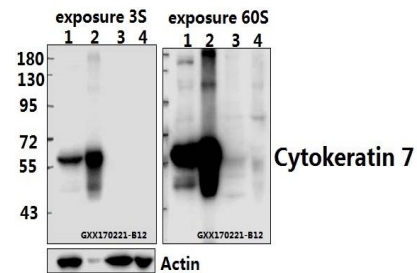
Storage&Stability:

Store at 4 °C short term. Aliquot and store at -20 °C long term. Avoid freeze-thaw cycles.

Specificity:

Cytokeratin 7 (L451) polyclonal antibody detects endogenous levels of Cytokeratin 7 protein.

DATA:



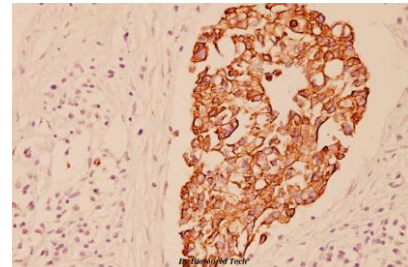
Western blot (WB) analysis of Cytokeratin 7 (L451) polyclonal antibody at 1:500 dilution

Lane1:SGC7901 whole cell lysate(40ug)

Lane2:A431 whole cell lysate(10ug)

Lane3:PC12 whole cell lysate(40ug)

Lane4:SP2/0 whole cell lysate(40ug)



Immunohistochemistry (IHC) analyzes of Cytokeratin 7 (L451) pAb in paraffin-embedded human breast carcinoma tissue at 1:100.

Note:

For research use only, not for use in diagnostic procedure.

Bioworld Technology, Inc.

Add: 1660 South Highway 100, Suite 500 St. Louis Park, MN 55416, USA.

Email: info@bioworld.com

Tel: 6123263284

Fax: 6122933841

Bioworld technology, co. Ltd.

Add: No 9, weidi road Qixia District Nanjing, 210046, P. R. China.

Email: info@biogot.com

Tel: 0086-025-68037686

Fax: 0086-025-68035151