

HSP90α (P717) polyclonal antibody

Catalog: BS1180

Host: Rabbit

Reactivity: Human, Mouse, Rat

BackGround:

In mammalian cells there are at least two Hsp90 isoforms, Hsp90a and Hsp90b which are encoded by separate genes. These ubiquitous and highly conserved proteins account for 1-2% of all cellular proteins in most cells. Hsp90 is part of the cells powerful network of chaperones to fight the deleterious consequences of protein unfolding caused by nonphysiological conditions. However, in the absence of stress, Hsp90 is a necessary component of fundamental cellular processes such as hormone signaling and cell cycle control. In this context several key regulatory proteins such as steroid receptors, cell cycle kinases involved in signal transduction and p53 have been identified as substrates of Hsp90.

Product:

Rabbit IgG, 1mg/ml in PBS with 0.02% sodium azide, 50% glycerol, pH7.2

Molecular Weight:

~ 85, 90 kDa

Swiss-Prot:

P07900

Purification&Purity:

The antibody was affinity-purified from rabbit antiserum by affinity-chromatography using epitope-specific immunogen and the purity is > 95% (by SDS-PAGE).

Applications:

WB: 1:500~1:1000

IHC: 1:50~1:200

IF: 1:50~1:200

IP: 1:50~1:200

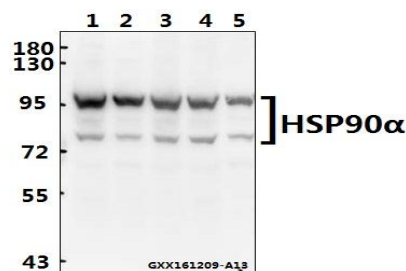
Storage&Stability:

Store at 4 °C short term. Aliquot and store at -20 °C long term. Avoid freeze-thaw cycles.

Specificity:

HSP90α (P717) polyclonal antibody detects endogenous levels of HSP90α protein.

DATA:



Western blot (WB) analysis of HSP90α (P717) polyclonal antibody at 1:500 dilution

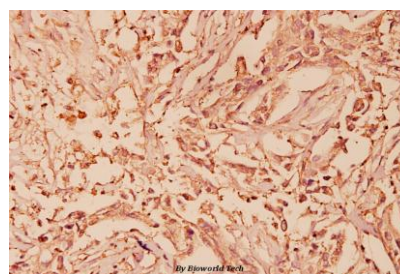
Lane1:Hela whole cell lysate(40ug)

Lane2:A549 whole cell lysate(40ug)

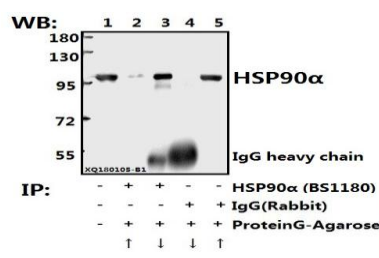
Lane3:NIH-3T3 whole cell lysate(40ug)

Lane4:PC12 whole cell lysate(40ug)

Lane5:L02 whole cell lysate(40ug)



Immunohistochemistry (IHC) analyzes of HSP90α (P717) pAb in paraffin-embedded human breast carcinoma tissue at 1:100.



Immunoprecipitation of L02 cell lysate using HSP90α (P717) pAb (Sepharose Bead Conjugate) #BD0048(lane 2 and lane 3) and Nonspecific IgG Control (Sepharose Bead Conjugate)#BD0047 (lane 4 and lane 5). Lane 1 is 30% input. The western blot was probed using HSP90α (P717) #BS1180. "↑" (supernatant) ; "↓" (deposition)

Bioworld Technology, Inc.

Add: 1660 South Highway 100, Suite 500 St. Louis Park, MN 55416, USA.

Email: info@bioworld.com

Tel: 6123263284

Fax: 6122933841

Bioworld technology, co. Ltd.

Add: No 9, weidi road Qixia District Nanjing, 210046, P. R. China.

Email: info@biogot.com

Tel: 0086-025-68037686

Fax: 0086-025-68035151



PRODUCT DATA SHEET

Bioworld Technology, Inc.

Note:

For research use only, not for use in diagnostic procedure.

Bioworld Technology, Inc.

Add: 1660 South Highway 100, Suite 500 St. Louis Park,
MN 55416, USA.

Email: info@bioworld.com

Tel: 6123263284

Fax: 6122933841

Bioworld technology, co. Ltd.

Add: No 9, weidi road Qixia District Nanjing, 210046,
P. R. China.

Email: info@biogot.com

Tel: 0086-025-68037686

Fax: 0086-025-68035151