

PRODUCT DATA SHEET



Bioworld Technology, Inc.

FGFR-3 (W153) Antibody

Cat No.: BS1125

Host: Rabbit

Reactivity: Human, Mouse, Rat

BACKGROUND

Acidic and basic fibroblast growth factors (FGFs) are members of a family of multifunctional polypeptide growth factors that stimulate proliferation of cells of mesenchymal, epithelial and neuroectodermal origin. Like other growth factors, FGFs act by binding and activating specific cell surface receptors. These include the Flg receptor or FGFR-1, the Bek receptor (or FGFR-2), FGFR-3, FGFR-4, FGFR-5 and FGFR-6. These receptors usually contain an extracellular ligand-binding region containing three immunoglobulin-like domains, a transmembrane domain and a cytoplasmic tyrosine kinase domain. The gene encoding human Bek (also designated K-sam) maps to chromosome 10q26 and is alternatively spliced to produce several isoforms. Heterogeneous mutations in Bek are associated with a range of craniosynostosis syndromes including Pfeiffer syndrome, Crouzon syndrome, Jackson-Weiss syndrome and Apert syndrome.

PRODUCT

1 mg/ml in Phosphate buffered saline (PBS) with 15 mM sodium azide, approx. pH 7.2.

PURIFICATION & PURITY

The antibody was affinity-purified from rabbit antiserum by affinity-chromatography using epitope-specific immunogen and the purity is > 95% (by SDS-PAGE).

APPLICATIONS

WB: 1:500 ~ 1:1000

IHC: 1:50 ~ 1:200 (Recommended Dilutions)

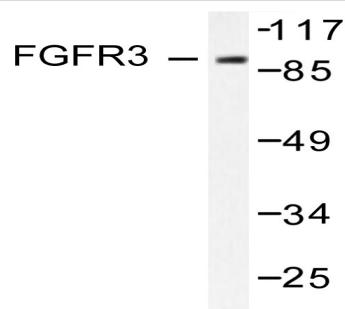
STORAGE & STABILITY

Store at 4°C short term. Aliquot and store at -20°C long term. Avoid freeze-thaw cycles.

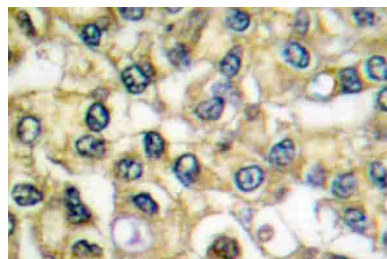
SPECIFICITY

FGFR3 (W153) antibody detects endogenous levels of FGFR3 protein.

DATA



Western blot (WB) analysis of FGFR3 (W153) antibody in extracts from LOVO cells.



Immunohistochemistry (IHC) analyzes of FGFR3 (W153) antibody in paraffin-embedded human breast carcinoma tissue.

RESEARCH USE

For research use only, not for use in diagnostic procedures.

Bioworld Technology, Inc.

1660 South Highway 100, Suite 500 St. Louis Park, MN 55416, USA. Tel: 6123263284
www.bioworlde.com Orders: order@bioworlde.com Support: support@bioworlde.com