

## ER $\alpha$ (L100) polyclonal antibody

Catalog: BS1114

Host: Rabbit

Reactivity: Human, Mouse, Rat

### BackGround:

Estrogen receptors (ER) are members of the steroid/thyroid hormone receptor superfamily of ligand-activated transcription factors. Estrogen receptors, including ER $\alpha$  and ER $\beta$ , contain DNA binding and ligand binding domains and are critically involved in regulating the normal function of reproductive tissues. ER $\alpha$  and ER $\beta$  have been shown to be differentially activated by various ligands. Receptor-ligand interactions trigger a cascade of events, including dissociation from heat shock proteins, receptor dimerization, phosphorylation and the association of the hormone activated receptor with specific regulatory elements in target genes. Evidence suggests that ER $\alpha$  and ER $\beta$  may be regulated by distinct mechanisms even though they share many functional characteristics.

### Product:

Rabbit IgG, 1mg/ml in PBS with 0.02% sodium azide, 50% glycerol, pH7.2

### Molecular Weight:

~ 66 kDa

### Swiss-Prot:

P03372

### Purification&Purity:

The antibody was affinity-purified from rabbit antiserum by affinity-chromatography using epitope-specific immunogen and the purity is > 95% (by SDS-PAGE).

### Applications:

WB: 1:500~1:1000

IHC: 1:50~1:200

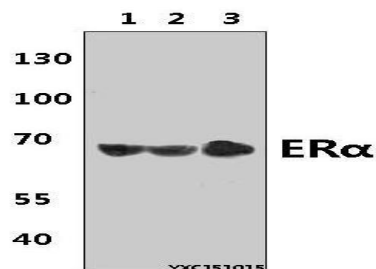
### Storage&Stability:

Store at 4 °C short term. Aliquot and store at -20 °C long term. Avoid freeze-thaw cycles.

### Specificity:

Estrogen Receptor- $\alpha$  (L100) polyclonal antibody detects endogenous levels of Estrogen Receptor- $\alpha$  protein.

### DATA:

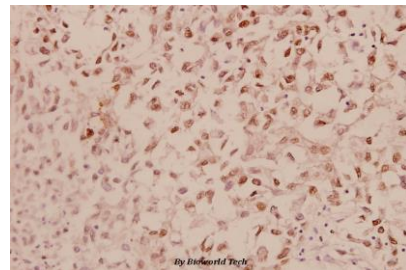


Western blot (WB) analysis of ER $\alpha$  (L100) polyclonal antibody at 1:500 dilution

Lane1:MCF-7 whole cell lysate(40 $\mu$ g)

Lane2:NIH-3T3 whole cell lysate(40 $\mu$ g)

Lane3:H9C2 whole cell lysate(40 $\mu$ g)



Immunohistochemistry (IHC) analyzes of ER $\alpha$  (L100) pAb in paraffin-embedded human breast carcinoma tissue at 1:100.

### Note:

For research use only, not for use in diagnostic procedure.

### Bioworld Technology, Inc.

Add: 1660 South Highway 100, Suite 500 St. Louis Park, MN 55416, USA.

Email: [info@bioworld.com](mailto:info@bioworld.com)

Tel: 6123263284

Fax: 6122933841

### Bioworld technology, co. Ltd.

Add: No 9, weidi road Qixia District Nanjing, 210046, P. R. China.

Email: [info@biogot.com](mailto:info@biogot.com)

Tel: 0086-025-68037686

Fax: 0086-025-68035151