

Ephrin-A4 (164) polyclonal antibody

Catalog: BS1109

Host: Rabbit

Reactivity: Human, Mouse, Rat

BackGround:

Ephrin A4 is also known as LERK4 or ELF4. Ephrin A4 binds EphA2, EphA3, EphA4, EphA5, EphA6, EphA7, and EphB1. To date, at least 14 members of the Eph receptor family and a family of 8 ligands have been identified. Ligands of Eph family receptors are structurally related membrane bound proteins that can be subdivided into two major subclasses: ephrin A and ephrin B. Ligands in the ephrin A subclass, including the prototype family member ephrin A1 (B61), are membrane associated through glycosylphosphatidyl inositol linkages; whereas ephrin B subclass consists of ligands with transmembrane domains. The general role of the Eph family is in mediating repulsive cell to cell interaction, as suggested by studies of axonal guidance and neural crest cell migration.

Product:

1 mg/ml in Phosphate buffered saline (PBS) with 0.05% sodium azide, approx. pH 7.2.

Molecular Weight:

~ 95 kDa

Swiss-Prot:

P52798

Purification&Purity:

The antibody was affinity-purified from rabbit antiserum by affinity-chromatography using epitope-specific im-

munogen and the purity is > 95% (by SDS-PAGE).

Applications:

WB: 1:500~1:1000

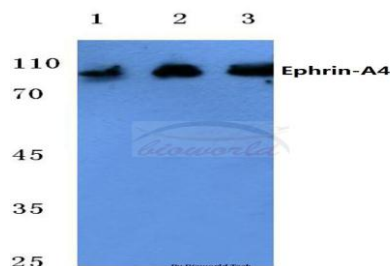
Storage&Stability:

Store at 4 °C short term. Aliquot and store at -20 °C long term. Avoid freeze-thaw cycles.

Specificity:

Ephrin-A4 (164) pAb detects endogenous levels of Ephrin-A4 protein.

DATA:



Western blot (WB) analysis of Ephrin-A4 (164) pAb at 1:500 dilution

Lane1: Jurkat cell lysate

Lane2: Mouse heart tissue lysate

Lane3: Rat heart tissue lysate

Note:

For research use only, not for use in diagnostic procedure.

Bioworld Technology, Inc.

Add: 1660 South Highway 100, Suite 500 St. Louis Park, MN 55416, USA.

Email: info@bioworld.com

Tel: 6123263284

Fax: 6122933841

Bioworld technology, co. Ltd.

Add: No 9, weidi road Qixia District Nanjing, 210046, P. R. China.

Email: info@biogot.com

Tel: 0086-025-68037686

Fax: 0086-025-68035151