

## E2F4/E2F5 (L50/83) polyclonal antibody

Catalog: BS1095

Host: Rabbit

Reactivity: Human, Mouse, Rat

### BackGround:

E2F was originally identified through its role in transcriptional activation of the adenovirus E2 promoter. Sequences homologous to the E2F binding site have been found upstream of a number of genes that encode proteins with putative functions in the G1 and S phases of the cell cycle. E2F-1 is a member of a broader family of transcriptional regulators including E2F-2, E2F-3, E2F-4, E2F-5 and E2F-6, each of which forms heterodimers with a second protein, DP-1, forming an "active" E2F transcriptional regulatory complex.

### Product:

Rabbit IgG, 1mg/ml in PBS with 0.02% sodium azide, 50% glycerol, pH7.2

### Molecular Weight:

~ 44 kDa

### Swiss-Prot:

Q16254 / Q15329

### Purification&Purity:

The antibody was affinity-purified from rabbit antiserum by affinity-chromatography using epitope-specific immunogen and the purity is > 95% (by SDS-PAGE).

### Applications:

IHC: 1:50~1:200

### Storage&Stability:

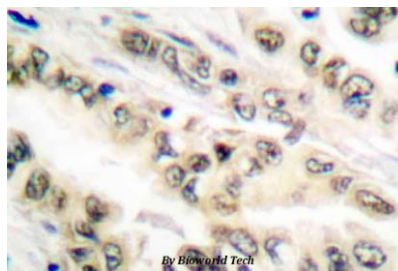
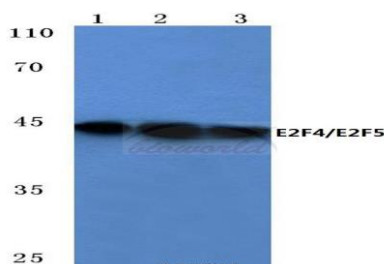
Store at 4 °C short term. Aliquot and store at -20 °C long

term. Avoid freeze-thaw cycles.

### Specificity:

E2F4/E2F5 (L50/83) polyclonal antibody detects endogenous levels of E2F4/E2F5 protein.

### DATA:



Immunohistochemistry (IHC) analyzes of E2F4/E2F5 (L50/83) pAb in paraffin-embedded human lung carcinoma tissue.

### Note:

For research use only, not for use in diagnostic procedure.

### Bioworld Technology, Inc.

Add: 1660 South Highway 100, Suite 500 St. Louis Park, MN 55416, USA.

Email: [info@bioworld.com](mailto:info@bioworld.com)

Tel: 6123263284

Fax: 6122933841

### Bioworld technology, co. Ltd.

Add: No 9, weidi road Qixia District Nanjing, 210046, P. R. China.

Email: [info@biogot.com](mailto:info@biogot.com)

Tel: 0086-025-68037686

Fax: 0086-025-68035151