

## PRODUCT DATA SHEET



Bioworld Technology, Inc.

### Cyclin E1 (I119) pAb

Cat No.: BS1085

Host: Rabbit

Reactivity: Human, Mouse, Rat

#### BACKGROUND

Cyclins were first identified in invertebrates as proteins that oscillate dramatically through the cell cycle. These proteins have been well conserved through evolution and play a critical role in regulation of cell division. Cyclin E, along with the three cyclin D proteins and cyclin C, has been shown to represent a putative G1 cyclin on the basis of its cyclic pattern of mRNA expression, with maximal levels being detected near the G1/S boundary. cyclin E has been found to be associated with the transcription factor E2F in a temporally regulated manner. The cyclin E/E2F complex is detected primarily during the G1 phase of the cell cycle and decreases as cells enter S phase. E2F is known to be a critical transcription factor for expression of several S phase specific proteins.

#### PRODUCT

1 mg/ml in Phosphate buffered saline (PBS) with 0.05

#### Molecular Weight

~49 kDa

#### PURIFICATION & PURITY

The antibody was affinity-purified from rabbit antiserum by affinity-chromatography using epitope-specific immunogen and the purity is > 95% (by SDS-PAGE).

#### APPLICATIONS

WB: 1:500 ~ 1:1000

IHC: 1:50 ~ 1:200

IF: 1:50 ~ 1:200 (Recommended Dilutions)

#### STORAGE & STABILITY

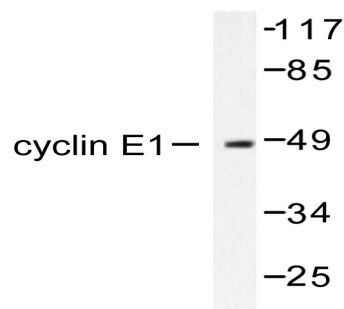
Store at 4°C short term. Aliquot and store at -20°C long term.

Avoid freeze-thaw cycles.

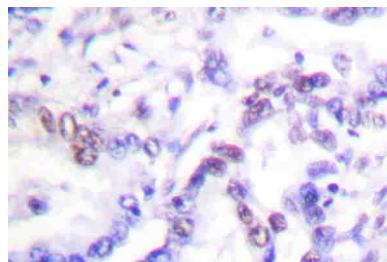
#### SPECIFICITY

Cyclin E1 (I119) pAb detects endogenous levels of Cyclin E1 protein.

#### DATA



Western blot (WB) analysis of Cyclin E1 (I119) pAb in extracts from K562 cell.



Immunohistochemistry (IHC) analyzes of Cyclin E1 (I119) pAb in paraffin-embedded human lung carcinoma tissue.

#### RESEARCH USE

For research use only, not for use in diagnostic procedures.

Bioworld Technology, Inc.

1660 South Highway 100, Suite 500 St. Louis Park, MN 55416, USA. Tel: 6123263284  
www.bioworld.com Orders: order@bioworld.com Support: support@bioworld.com