

PRODUCT DATA SHEET



Bioworld Technology, Inc.

Cyclin A1 (R436) pAb

Cat No.: BS1084

Host: Rabbit

Reactivity: Human, Mouse, Rat

BACKGROUND

The critical role that the family of regulatory proteins known as cyclins play in eukaryotic cell cycle regulation is well established. The best-characterized cyclin complex is the mitotic cyclin B/Cdc2 p34 kinase, the active component of maturing promoting factor. Cyclin A accumulates prior to cyclin B in the cell cycle, appears to be involved in control of S phase and has been shown to associate with cyclin-dependent kinase-2 (Cdk2). In addition, cyclin A has been implicated in cell transformation and is found in complexes with E1A, transcription factors DRTF1 and E2F and retinoblastoma protein, p110. A second form of cyclin A, named cyclin A1 because of its high sequence homology to *Xenopus* cyclin A1, is most highly expressed in germ cells. It has been proposed that cyclin A1 can associate with Cdk2, p39 and Cdc2 p34.

PRODUCT

1 mg/ml in Phosphate buffered saline (PBS) with 0.05

Molecular Weight

~52 kDa

PURIFICATION & PURITY

The antibody was affinity-purified from rabbit antiserum by affinity-chromatography using epitope-specific immunogen and the purity is > 95% (by SDS-PAGE).

APPLICATIONS

WB: 1:500 ~ 1:1000

IHC: 1:50 ~ 1:200 (Recommended Dilutions)

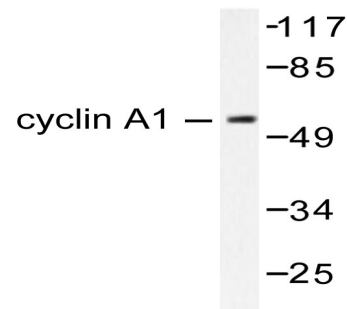
STORAGE & STABILITY

Store at 4°C short term. Aliquot and store at -20°C long term. Avoid freeze-thaw cycles.

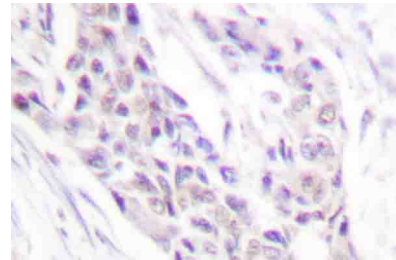
SPECIFICITY

Cyclin A1 (R436) pAb detects endogenous levels of Cyclin A1 protein.

DATA



Western blot (WB) analysis of Cyclin A1 (R436) pAb in extracts from SKOV3 cells treated with Heat shock.



Immunohistochemistry (IHC) analyzes of Cyclin A1 (R436) pAb in paraffin-embedded human breast carcinoma tissue.

RESEARCH USE

For research use only, not for use in diagnostic procedures.

Bioworld Technology, Inc.

1660 South Highway 100, Suite 500 St. Louis Park, MN 55416, USA. Tel: 6123263284
www.bioworlde.com Orders: order@bioworlde.com Support: support@bioworlde.com