

## Claudin 1 (R197) polyclonal antibody

Catalog: BS1063

Host: Rabbit

Reactivity: Human,Rat,Mouse

### Background:

The claudin superfamily consists of many structurally related proteins in humans. These proteins are important structural and functional components of tight junctions in paracellular transport. Claudins are located in both epithelial and endothelial cells in all tight junction-bearing tissues. Three classes of proteins are known to localize to tight junctions, including the claudins, Occludin and junction adhesion molecule (JAM). Claudins, which consist of four transmembrane domains and two extracellular loops, make up tight junction strands. Emerging evidence suggests that the claudin family of proteins regulates transport through tight junctions via differential discrimination for solute size and charge. Claudin expression is often highly restricted to specific regions of different tissues and may have an important role in transcellular transport through tight junctions.

### Product:

Rabbit IgG, 1mg/ml in PBS with 0.02% sodium azide, 50% glycerol, pH7.2

### Molecular Weight:

~ 22 kDa

### Swiss-Prot:

O95832

### Purification&Purity:

The antibody was affinity-purified from rabbit antiserum by affinity-chromatography using epitope-specific immunogen and the purity is > 95% (by SDS-PAGE).

### Applications:

WB: 1:500~1:1000

IHC: 1:50~1:200

IF: 1:50~1:200

### Storage&Stability:

Store at 4 °C short term. Aliquot and store at -20 °C long term. Avoid freeze-thaw cycles.

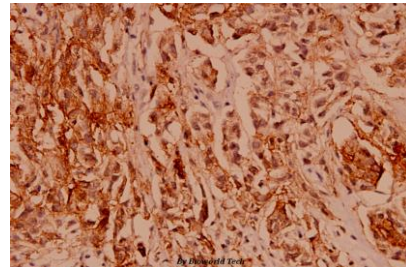
### Specificity:

Claudin 1 (R197) polyclonal antibody detects endogenous levels of Claudin 1 protein.

### DATA:



Western blot (WB) analysis of Claudin 1 (R197) pAb at 1:500 dilution  
Lane1:PC12 whole cell lysate(40ug)  
Lane2:The Liver tissue lysate of Mouse(40ug)  
Lane3:The Kidney tissue lysate of Rat(20ug)  
Lane4:L02 whole cell lysate(40ug)  
Lane5:H1792 whole cell lysate(40ug)



Immunohistochemistry (IHC) analyzes of Claudin-1 (R197) pAb in paraffin-embedded human breast carcinoma tissue at 1:100.



Western blot (WB) analysis of Claudin 1 (R197) pAb at 1:500 dilution  
Lane1:PC12 whole cell lysate(40ug)  
Lane2:The Liver tissue lysate of Mouse(40ug)  
Lane3:The Kidney tissue lysate of Rat(20ug)

### Bioworld Technology, Inc.

Add: 1660 South Highway 100, Suite 500 St. Louis Park, MN 55416, USA.

Email: [info@bioworld.com](mailto:info@bioworld.com)

Tel: 6123263284

Fax: 6122933841

### Bioworld technology, co. Ltd.

Add: No 9, weidi road Qixia District Nanjing, 210046, P. R. China.

Email: [info@biogot.com](mailto:info@biogot.com)

Tel: 0086-025-68037686

Fax: 0086-025-68035151



## PRODUCT DATA SHEET

Bioworld Technology, Inc.

Lane4:L02 whole cell lysate(40ug)

Lane5:H1792 whole cell lysate(40ug)

**Note:**

For research use only, not for use in diagnostic procedure.

---

**Bioworld Technology, Inc.**

Add: 1660 South Highway 100, Suite 500 St. Louis Park,  
MN 55416, USA.

Email: [info@bioworld.com](mailto:info@bioworld.com)

Tel: 6123263284

Fax: 6122933841

**Bioworld technology, co. Ltd.**

Add: No 9, weidi road Qixia District Nanjing, 210046,  
P. R. China.

Email: [info@biogot.com](mailto:info@biogot.com)

Tel: 0086-025-68037686

Fax: 0086-025-68035151