

PRODUCT DATA SHEET



Bioworld Technology, Inc.

BAD (R149) pAb

Cat No.: BS1028

Host: Rabbit

Reactivity: Human, Mouse, Rat

BACKGROUND

Bad is a member of the Bcl2 family and acts to promote apoptosis by forming heterodimers with the survival proteins Bcl2 and BclxL, thus preventing them from binding with BAX. Bad is found on the outer mitochondrial membrane and, once phosphorylated in response to growth stimuli, translocates to the cytoplasm. The phosphorylation status of Bad represents a key checkpoint for death or cell survival. JNK-induced phosphorylation of BAD serine 128 promotes the apoptotic role of Bad by opposing the inhibitory effect of growth factor on Bad-mediated apoptosis. Cdc2-induced phosphorylation of Bad serine 128 has an inhibitory effect on its interaction with 14-3-3 proteins. The latter interaction is critical for Bad phosphorylation at serine 155, a site within the BH3 domain that leads to the release of BclxL and the promotion of cell survival. Alternative splicing of this gene results in two transcript variants which encode the same isoform.

PRODUCT

1 mg/ml in Phosphate buffered saline (PBS) with 0.05

Molecular Weight

~24 kDa

PURIFICATION & PURITY

The pAb was affinity-purified from rabbit antiserum by affinity-chromatography using epitope-specific immunogen and the purity is > 95% (by SDS-PAGE).

APPLICATIONS

WB: 1:500 ~ 1:1000

IHC: 1:50 ~ 1:200 (Recommended Dilutions)

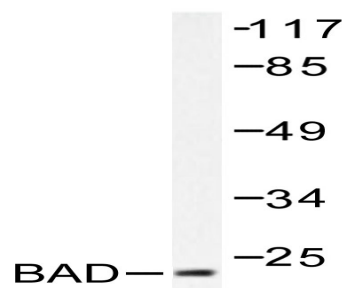
STORAGE & STABILITY

Store at 4°C short term. Aliquot and store at -20°C long term. Avoid freeze-thaw cycles.

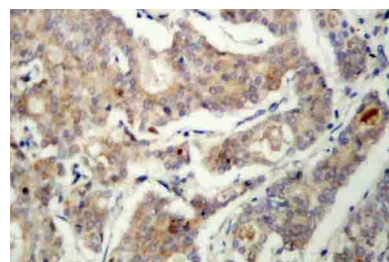
SPECIFICITY

BAD (R149) pAb detects endogenous levels of BAD protein.

DATA



Western blot (WB) analysis of BAD (R149) pAb in extracts from 293 cells treated with forskolin.



Immunohistochemistry (IHC) analyzes of BAD (R149) pAb in paraffin-embedded human breast carcinoma tissue.

RESEARCH USE

For research use only, not for use in diagnostic procedures.

Bioworld Technology, Inc.

1660 South Highway 100, Suite 500 St. Louis Park, MN 55416, USA. Tel: 6123263284
www.bioworlde.com Orders: order@bioworlde.com Support: support@bioworlde.com