

## VPS34 polyclonal antibody

Catalog: AP1010

Host: Rabbit

Reactivity: Human, Mouse, Rat

### BackGround:

VPS34 (vacuolar protein sorting-associated protein 34), also known as VPT29, VPL7, PEP15 or END12, is a 875 amino acid peripheral membrane protein that localizes to the golgi apparatus. Belonging to the PI3/PI4-kinase family, VPS34 is involved in endosome-to-Golgi retrograde transport as part of the VPS34 PI3-kinase complex II. The VPS34 PI3-kinase complex II is required for the endosome-to-Golgi retrieval of PEP1 and KEX2, and the recruitment of VPS5 and VPS7, two components of the retromer complex, to endosomal membranes. It has been suggested that VPS34 may also be involved in ethanol tolerance and cell wall integrity.

### Product:

Rabbit IgG, 1mg/ml in PBS with 0.02% sodium azide, 50% glycerol, pH7.2

### Molecular Weight:

~ 100 kDa

### Swiss-Prot:

Q8NEB9

### Purification&Purity:

The antibody was affinity-purified from rabbit antiserum by affinity-chromatography using epitope-specific immunogen and the purity is > 95% (by SDS-PAGE).

### Applications:

WB: 1:500~1:1000

IP: 1:50~1:200

### Storage&Stability:

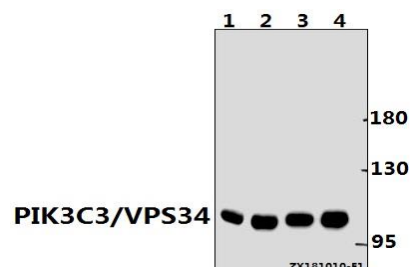
Store at 4 °C short term. Aliquot and store at -20 °C long term. Avoid freeze-thaw cycles.

### Specificity:

VPS34 (phospho-Ser249) polyclonal antibody detects

endogenous levels of VPS34 protein only when phosphorylated at Ser249.

### DATA:



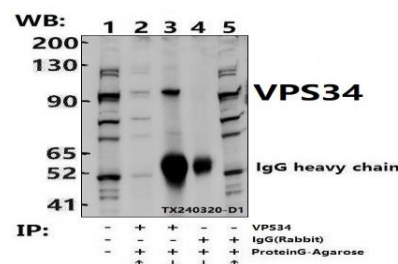
Western blot (WB) analysis of PIK3C3/VPS34 pAb at 1:500 dilution

Lane1:C6 whole cell lysate(40ug)

Lane2:AML-12 whole cell lysate(40ug)

Lane3:H1792 whole cell lysate(40ug)

Lane4:MCF-7 whole cell lysate(40ug)



Immunoprecipitation of PC12 cell lysates using VPS34 pAb (Sepharose Bead Conjugate)#BD0048 (lane 2 and lane 3) and Nonspecific IgG Control (Sepharose Bead Conjugate)#BD0048 (lane 4 and lane 5). Lane 1 is 30% input. The western blot was probed using VPS34 pAb.

### Note:

For research use only, not for use in diagnostic procedure.

### Bioworld Technology, Inc.

Add: 1660 South Highway 100, Suite 500 St. Louis Park, MN 55416, USA.

Email: [info@bioworld.com](mailto:info@bioworld.com)

Tel: 6123263284

Fax: 6122933841

### Bioworld technology, co. Ltd.

Add: No 9, weidi road Qixia District Nanjing, 210046, P. R. China.

Email: [info@biogot.com](mailto:info@biogot.com)

Tel: 0086-025-68037686

Fax: 0086-025-68035151