

**MAP1LC3A/B (V244) polyclonal antibody**

Catalog: AP0763

Host: Rabbit

Reactivity: Rat, Mouse

**BackGround:**

Autophagy is a catabolic process for the autophagosome-lysosomal degradation of bulk cytoplasmic contents. Autophagy is generally activated by conditions of nutrient deprivation, but it has also been associated with a number of physiological processes including development, differentiation, neurodegenerative diseases, infection, and cancer. Autophagy marker Light Chain 3 (LC3) was originally identified as a subunit of microtubule-associated proteins 1A and 1B (termed MAP1LC3) and subsequently found to contain similarity to the yeast protein Apg8/Aut7/Cvt5 critical for autophagy. Three human LC3 isoforms (LC3A, LC3B, and LC3C) undergo posttranslational modifications during autophagy. Cleavage of LC3 at the carboxy terminus immediately following synthesis yields the cytosolic LC3-I form. During autophagy, LC3-I is converted to LC3-II through lipidation by a ubiquitin-like system involving Atg7 and Atg3 that allows for LC3 to become associated with autophagic vesicles. The presence of LC3 in autophagosomes and the conversion of LC3 to the lower migrating form, LC3-II, have been used as indicators of autophagy.

**Product:**

Rabbit IgG, 1mg/ml in PBS with 0.02% sodium azide, 50% glycerol, pH7.2.

**Molecular Weight:**

~ 15 kDa

**Swiss-Prot:**

Q9H492/Q9GZQ8

**Purification&Purity:**

The antibody was affinity-purified from rabbit antiserum by affinity-chromatography using epitope-specific immunogen and the purity is > 95% (by SDS-PAGE).

**Applications:**

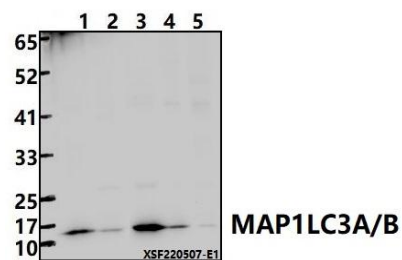
WB: 1:1000~1:2000

**Storage&Stability:**

Store at 4 °C short term. Aliquot and store at -20 °C long term. Avoid freeze-thaw cycles.

**Specificity:**

MAP1LC3A/B (V244) polyclonal antibody detects endogenous levels of MAP1LC3A/B protein.

**DATA:**

Western blot (WB) analysis of MAP1LC3A/B (V244) polyclonal antibody at 1:1000 dilution

Lane1: The Kidney tissue lysate of Mouse(30ug)

Lane2: The Kidney tissue lysate of Rat(30ug)

Lane3: The Heart tissue lysate of Rat(30ug)

Lane4: The Liver tissue lysate of Mouse(30ug)

Lane5: The Liver tissue lysate of Rat(30ug)

**Note:**

For research use only, not for use in diagnostic procedure.

**Bioworld Technology, Inc.**

Add: 1660 South Highway 100, Suite 500 St. Louis Park, MN 55416, USA.

Email: [info@bioworld.com](mailto:info@bioworld.com)

Tel: 6123263284

Fax: 6122933841

**Bioworld technology, co. Ltd.**

Add: No 9, weidi road Qixia District Nanjing, 210046, P. R. China.

Email: [info@biogol.com](mailto:info@biogol.com)

Tel: 0086-025-68037686

Fax: 0086-025-68035151