

## CD11B (E1) polyclonal antibody

Catalog: AP0752

Host: Rabbit

Reactivity: Human, Mouse, Rat

### BackGround:

Integrin  $\alpha$ M, also designated complement component receptor-3  $\alpha$ , CD11b (p170), macrophage antigen a polypeptide, cell surface glycoprotein Mac-1 a subunit, MAC1A, MO1A and ITGAM) is a cell adhesion molecule that acts as a receptor for cell surface ligands such as intracellular adhesion molecules (ICAMs) or soluble ligands. Integrins are heterodimeric proteins that contain an a chain and b chain. Integrin  $\alpha$ M combines with the Integrin  $\beta$ 2 to form a leukocyte-specific integrin referred to as macrophage receptor 1 (Mac-1), or inactivated-C3b (iC3b) receptor 3 (CR3). Integrin  $\alpha$ M/ $\beta$ 2 is important in the adherence of neutrophils and monocytes to stimulated endothelium, and also in the phagocytosis of complement coated particles.

### Product:

Rabbit IgG, 1mg/ml in PBS with 0.02% sodium azide, 50% glycerol, pH7.2

### Molecular Weight:

~ 170 kDa

### Swiss-Prot:

P11215

### Purification&Purity:

The antibody was affinity-purified from rabbit antiserum by affinity-chromatography using epitope-specific immunogen and the purity is > 95% (by SDS-PAGE).

### Applications:

WB: 1:500~1:1000

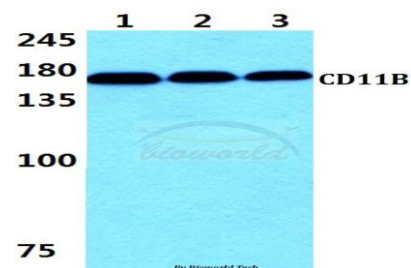
### Storage&Stability:

Store at 4 °C short term. Aliquot and store at -20 °C long term. Avoid freeze-thaw cycles.

### Specificity:

CD11B (E1) polyclonal antibody detects endogenous levels of CD11B protein.

### DATA:



Western blot (WB) analysis of CD11B (E1) polyclonal antibody at 1:500 dilution

Lane1:THP-1 cell lysate

Lane2:Raw264.7 cell lysate

Lane3:PC12 cell lysate

### Note:

For research use only, not for use in diagnostic procedure.

### Bioworld Technology, Inc.

Add: 1660 South Highway 100, Suite 500 St. Louis Park, MN 55416, USA.

Email: [info@bioworld.com](mailto:info@bioworld.com)

Tel: 6123263284

Fax: 6122933841

### Bioworld technology, co. Ltd.

Add: No 9, weidi road Qixia District Nanjing, 210046, P. R. China.

Email: [info@biogot.com](mailto:info@biogot.com)

Tel: 0086-025-68037686

Fax: 0086-025-68035151