

## Caspase-9 (T125) polyclonal antibody

Catalog: AP0580

Host: Rabbit

Reactivity: Human

### BackGround:

Caspase-9 (ICE-LAP6, Mch6) is an important member of the cysteine aspartic acid protease (caspase) family. Upon apoptotic stimulation, cytochrome c released from mitochondria associates with the 47 kDa procaspase-9/Apaf-1. Apaf-1 mediated activation of caspase-9 involves intrinsic proteolytic processing resulting in cleavage at Asp315 and producing a p35 subunit. Another cleavage occurs at Asp330 producing a p37 subunit that can serve to amplify the apoptotic response. Cleaved caspase-9 further processes other caspase members, including caspase-3 and caspase-7, to initiate a caspase cascade, which leads to apoptosis.

### Product:

Rabbit IgG, 1mg/ml in PBS with 0.02% sodium azide, 50% glycerol, pH7.2.

### Molecular Weight:

~ 37, 40/40, 46 kDa

### Swiss-Prot:

P55211

### Purification&Purity:

The antibody was affinity-purified from rabbit antiserum by affinity-chromatography using epitope-specific immunogen and the purity is > 95% (by SDS-PAGE).

### Applications:

WB: 1:1000~1:2000

IP: 1:50~1:200

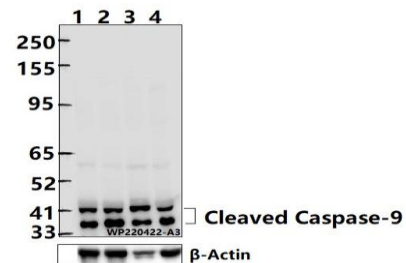
### Storage&Stability:

Store at 4 °C short term. Aliquot and store at -20 °C long term. Avoid freeze-thaw cycles.

### Specificity:

Caspase-9 (T125) polyclonal antibody detects endogenous levels of Caspase-9 protein.

### DATA:



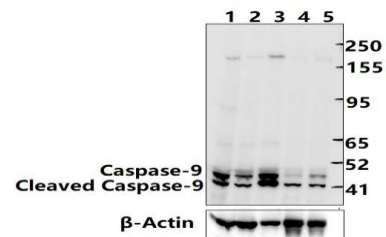
Western blot (WB) analysis of Caspase-9 (T125) polyclonal antibody at 1:1000 dilution

Lane1:Jurkat whole cell lysate(40ug)

Lane2:Jurkat treated with etoposide(25µM,5 hours) whole cell lysate(40ug)

Lane3:K562 whole cell lysate(40ug)

Lane4:Jurkat whole cell lysate(40ug)



Western blot (WB) analysis of Caspase-9 (T125) polyclonal antibody at 1:5000 dilution

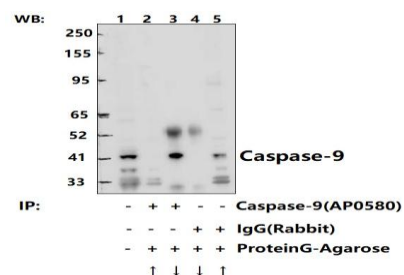
Lane1:A549 whole cell lysate(40ug)

Lane2:Jurkat whole cell lysate(40ug)

Lane3:K562 whole cell lysate(40ug)

Lane4:Jurkat treated with etoposide(25µM,5 hours) whole cell lysate(40ug)

Lane5:Jurkat whole cell lysate(40ug)



### Bioworld Technology, Inc.

Add: 1660 South Highway 100, Suite 500 St. Louis Park, MN 55416, USA.

Email: [info@bioworld.com](mailto:info@bioworld.com)

Tel: 6123263284

Fax: 6122933841

### Bioworld technology, co. Ltd.

Add: No 9, weidi road Qixia District Nanjing, 210046, P. R. China.

Email: [info@biogot.com](mailto:info@biogot.com)

Tel: 0086-025-68037686

Fax: 0086-025-68035151



## PRODUCT DATA SHEET

Bioworld Technology, Inc.

Immunoprecipitation of K562 cell lysates using Caspase-9 (T125) pAb (Sepharose Bead Conjugate)#BD0048 (lane 2 and lane 3) and Nonspecific IgG Control (Sepharose Bead Conjugate)#BD0048 (lane 4 and lane 5) .Lane 1 is 30% input. The western blot was probed using Caspase-9 (T125) pAb #AP0580.

**Note:**

For research use only, not for use in diagnostic procedure.

---

**Bioworld Technology, Inc.**

**Add:** 1660 South Highway 100, Suite 500 St. Louis Park,  
MN 55416, USA.

**Email:** [info@bioworld.com](mailto:info@bioworld.com)

**Tel:** 6123263284

**Fax:** 6122933841

**Bioworld technology, co. Ltd.**

**Add:** No 9, weidi road Qixia District Nanjing, 210046,  
P. R. China.

**Email:** [info@biogot.com](mailto:info@biogot.com)

**Tel:** 0086-025-68037686

**Fax:** 0086-025-68035151