

## PKC $\alpha$ (G633) polyclonal antibody

Catalog: AP0408

Host: Rabbit

Reactivity: Human, Mouse, Rat

### Background:

Members of the protein kinase C (PKC) family play a key regulatory role in a variety of cellular functions including cell growth and differentiation, gene expression, hormone secretion and membrane function. PKCs were originally identified as serine/threonine protein kinases whose activity was dependent on calcium and phospholipids. Diacylglycerols (DAG) and tumor promoting phorbol esters bind to and activate PKC. PKCs can be subdivided into at least two major classes including conventional (c) PKC isoforms ( $\alpha$ ,  $\beta$ I,  $\beta$ II and  $\gamma$ ) and novel (n) PKC isoforms ( $\delta$ ,  $\epsilon$ ,  $\zeta$ ,  $\eta$  and  $\theta$ ). Patterns of expression for each PKC isoform differ among tissues and PKC family members exhibit clear differences in their cofactor dependencies. For instance, the kinase activities of nPKC  $\delta$  and  $\epsilon$  are independent of  $Ca^{2+}$ .

### Product:

Rabbit IgG, 1mg/ml in PBS with 0.02% sodium azide, 50% glycerol, pH7.2

### Molecular Weight:

~ 80 kDa

### Swiss-Prot:

P17252

### Purification&Purity:

The antibody was affinity-purified from rabbit antiserum by affinity-chromatography using epitope-specific immunogen and the purity is > 100% (by SDS-PAGE).

### Applications:

WB:1:500~1:1000

IHC:1:50~1:200

IP:1:10~1:100

### Storage&Stability:

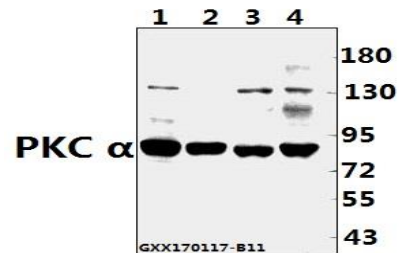
Store at 4 °C short term. Aliquot and store at -20 °C long term. Avoid freeze-thaw cycles.

### Specificity:

PKC  $\alpha$  (G633) polyclonal antibody detects endogenous

levels of PKC  $\alpha$  protein.

### DATA:



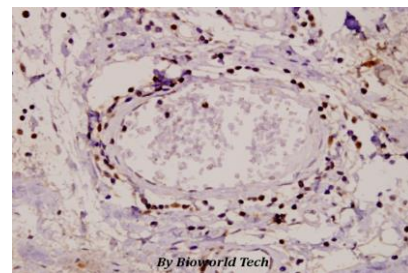
Western blot (WB) analysis of PKC  $\alpha$  (G633) polyclonal antibody at 1:500 dilution

Lane1:PC12 whole cell lysate(40ug)

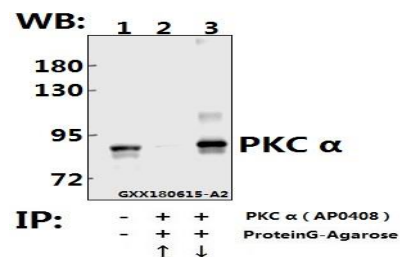
Lane2:CT26 whole cell lysate(40ug)

Lane3:HEK293T whole cell lysate(40ug)

Lane4:L02 whole cell lysate(40ug)



Immunohistochemistry (IHC) analyzes of PKC  $\alpha$  (G633) pAb in paraffin-embedded human tonsil carcinoma tissue at 1:50.



Immunoprecipitation of A549 cell lysate using PKC  $\alpha$  (G633) pAb (Sepharose Bead Conjugate) #BD0048(lane 2 and lane 3). Lane 1 is 20% input. The western blot was probed using PKC  $\alpha$  (G633) pAb #AP0408. “ $\uparrow$ ” (supernatant); “ $\downarrow$ ” (deposition)

### Note:

### Bioworld Technology, Inc.

Add: 1660 South Highway 100, Suite 500 St. Louis Park, MN 55416, USA.

Email: [info@bioworld.com](mailto:info@bioworld.com)

Tel: 6123263284

Fax: 6122933841

### Bioworld technology, co. Ltd.

Add: No 9, weidi road Qixia District Nanjing, 210046, P. R. China.

Email: [info@biogot.com](mailto:info@biogot.com)

Tel: 0086-025-68037686

Fax: 0086-025-68035151



## PRODUCT DATA SHEET

Bioworld Technology, Inc.

---

For research use only, not for use in diagnostic procedure.

---

### **Bioworld Technology, Inc.**

**Add:** 1660 South Highway 100, Suite 500 St. Louis Park,  
MN 55416, USA.

**Email:** [info@bioworld.com](mailto:info@bioworld.com)

**Tel:** 6123263284

**Fax:** 6122933841

### **Bioworld technology, co. Ltd.**

**Add:** No 9, weidi road Qixia District Nanjing, 210046,  
P. R. China.

**Email:** [info@biogot.com](mailto:info@biogot.com)

**Tel:** 0086-025-68037686

**Fax:** 0086-025-68035151