

## Smad2/3 (phospho-T8) polyclonal antibody

Catalog: AP0326

Host: Rabbit

Reactivity: Human, Mouse, Rat

### Background:

Smad proteins, the mammalian homologs of the Drosophila mothers against decapentaplegic (Mad), have been implicated as downstream effectors of  $\text{GF}\beta/\text{BMP}$  signaling. Smad1 (also designated Madr1 or JV4-1) and Smad5 are effectors of BMP-2 and BMP-4 function, while Smad2 (also designated Madr2 or JV18-1) and Smad3 are involved in  $\text{TGF}\beta$  and activin-mediated growth modulation. Smad4 (also designated DPC4) has been shown to mediate all of the above activities through interaction with various Smad family members. Smad6 and Smad7 regulate the response to activin/ $\text{TGF}\beta$  signaling by interfering with  $\text{TGF}\beta$ -mediated phosphorylation of other Smad proteins.

### Product:

Rabbit IgG, 1mg/ml in PBS with 0.02% sodium azide, 50% glycerol, pH7.2

### Molecular Weight:

~ 55,60 kDa

### Swiss-Prot:

P84022/Q15796

### Purification&Purity:

The antibody was affinity-purified from rabbit antiserum by affinity-chromatography using epitope-specific immunogen and the purity is > 95% (by SDS-PAGE).

### Applications:

WB: 1:1000~1:2000

IF: 1:50~1:200

IP: 1:50~1:200

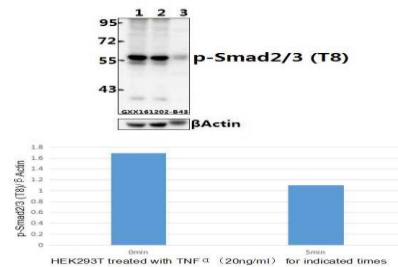
### Storage&Stability:

Store at 4 °C short term. Aliquot and store at -20 °C long term. Avoid freeze-thaw cycles.

### Specificity:

p-Smad2/3 (T8) polyclonal antibody detects endogenous levels of Smad2/3 protein only when phosphorylated at Thr8.

### DATA:

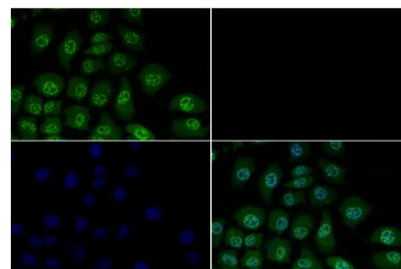


Western blot (WB) analysis of Smad2/3 (phospho-T8) polyclonal antibody at 1:500 dilution

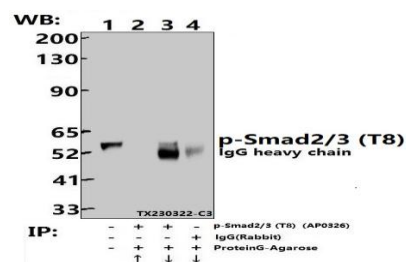
Lane1:HEK293T whole cell lysate

Lane2:HEK293T treated with  $\text{TNF}\alpha$ (20ng/ml)for 10 min whole cell lysate

Lane3:The Heart tissue lysate of Mouse



Immunofluorescence analysis of A549 cells using Smad2/3 (phospho-T8) polyclonal antibody at dilution of 1:200.



Immunoprecipitation of A549 cell lysates using Smad2/3 (phospho-T8) pAb (Sepharose Bead Conjugate)#BD0048 (lane 2 and lane 3) and Nonspecific IgG Control (Sepharose Bead Conjugate)#BD0048 (lane 4). Lane 1 is 30% input. The western blot was probed using Smad2/3 (phospho-T8) pAb #AP0326.

### Note:

### Bioworld Technology, Inc.

Add: 1660 South Highway 100, Suite 500 St. Louis Park, MN 55416, USA.

Email: [info@bioworld.com](mailto:info@bioworld.com)

Tel: 6123263284

Fax: 6122933841

### Bioworld technology, co. Ltd.

Add: No 9, weidi road Qixia District Nanjing, 210046, P. R. China.

Email: [info@biogot.com](mailto:info@biogot.com)

Tel: 0086-025-68037686

Fax: 0086-025-68035151



## PRODUCT DATA SHEET

Bioworld Technology, Inc.

---

For research use only, not for use in diagnostic procedure.

---

### **Bioworld Technology, Inc.**

**Add:** 1660 South Highway 100, Suite 500 St. Louis Park,  
MN 55416, USA.

**Email:** [info@bioworld.com](mailto:info@bioworld.com)

**Tel:** 6123263284

**Fax:** 6122933841

### **Bioworld technology, co. Ltd.**

**Add:** No 9, weidi road Qixia District Nanjing, 210046,  
P. R. China.

**Email:** [info@biogot.com](mailto:info@biogot.com)

**Tel:** 0086-025-68037686

**Fax:** 0086-025-68035151