

PKC α (phospho-T638) polyclonal antibody

Catalog: AP0290

Host: Rabbit

Reactivity: Human, Mouse, Rat

Background:

Members of the protein kinase C (PKC) family play a key regulatory role in a variety of cellular functions including cell growth and differentiation, gene expression, hormone secretion and membrane function. PKCs were originally identified as serine/threonine protein kinases whose activity was dependent on calcium and phospholipids. Diacylglycerols (DAG) and tumor promoting phorbol esters bind to and activate PKC. PKCs can be subdivided into at least two major classes including conventional (c) PKC isoforms (α , β I, β II and γ) and novel (n) PKC isoforms (δ , ϵ , ζ , η and θ). Patterns of expression for each PKC isoform differ among tissues and PKC family members exhibit clear differences in their cofactor dependencies. For instance, the kinase activities of nPKC δ and ϵ are independent of Ca^{2+} .

Product:

Rabbit IgG, 1mg/ml in PBS with 0.02% sodium azide, 50% glycerol, pH7.2

Molecular Weight:

~ 80 kDa

Swiss-Prot:

P17252

Purification&Purity:

The antibody was affinity-purified from rabbit antiserum by affinity-chromatography using epitope-specific immunogen and the purity is > 96% (by SDS-PAGE).

Applications:

WB: 1:500~1:1000

IHC: 1:50~1:200

IP: 1:10~1:100

Storage&Stability:

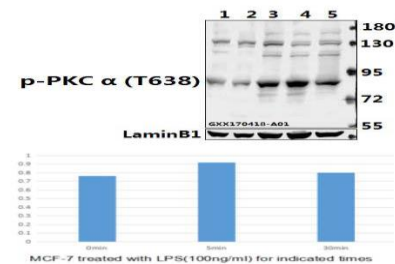
Store at 4 °C short term. Aliquot and store at -20 °C long term. Avoid freeze-thaw cycles.

Specificity:

PKC α (phospho-T638) polyclonal antibody detects en-

dogenous levels of PKC α protein when phosphorylated at Thr638.

DATA:



Western blot (WB) analysis of PKC α (phospho-T638) polyclonal antibody at 1:500 dilution

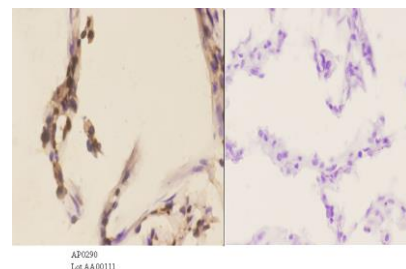
Lane1:PC12 whole cell lysate(40ug)

Lane2:CT26 whole cell lysate(40ug)

Lane3:MCF-7 treated with LPS(100ng/ml) for 30 minutes whole cell lysate

Lane4:MCF-7 treated with LPS(100ng/ml) for 5 minutes whole cell lysate

Lane5:MCF-7 whole cell lysate



Immunohistochemistry (IHC) analyzes of p-PKC α (T638) pAb in paraffin-embedded human lung carcinoma tissue at 1:50. showing cytoplasmic and nucleus staining. Negative control (the right) Using PBS instead of primary antibody, secondary antibody is Goat Anti-Rabbit IgG-biotin followed by avidin-peroxidase.

Bioworld Technology, Inc.

Add: 1660 South Highway 100, Suite 500 St. Louis Park, MN 55416, USA.

Email: info@bioworld.com

Tel: 6123263284

Fax: 6122933841

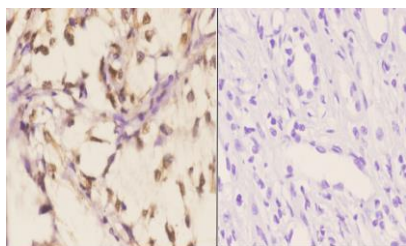
Bioworld technology, co. Ltd.

Add: No 9, weidi road Qixia District Nanjing, 210046, P. R. China.

Email: info@biogot.com

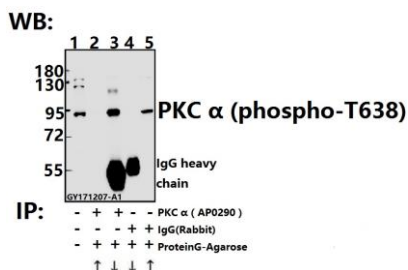
Tel: 0086-025-68037686

Fax: 0086-025-68035151



AP0290
Lot AA10111

Immunoprecipitation of L02 cell lysate using PKC α (phospho-T638) pAb (Sepharose Bead Conjugate) #BD0048(lane 2 and lane 3) and Nonspecific IgG Control (Sepharose Bead Conjugate)#BD0047 (lane 4) .Lane 1 is 30% input. The western blot was probed using SHP-2 (E574) pAb #AP0290. “ \uparrow ” (supernatant) ; “ \downarrow ” (deposition)



Immunoprecipitation of L02 cell lysate using PKC α (phospho-T638) pAb (Sepharose Bead Conjugate) #BD0048(lane 2 and lane 3) and

Nonspecific IgG Control (Sepharose Bead Conjugate)#BD0048 (lane 4) .Lane 1 is 30% input. The western blot was probed using SHP-2 (E574) pAb #AP0290. “ \uparrow ” (supernatant) ; “ \downarrow ” (deposition)

Note:

For research use only, not for use in diagnostic procedure.

Bioworld Technology, Inc.

Add: 1660 South Highway 100, Suite 500 St. Louis Park, MN 55416, USA.

Email: info@bioworld.com

Tel: 6123263284

Fax: 6122933841

Bioworld technology, co. Ltd.

Add: No 9, weidi road Qixia District Nanjing, 210046, P. R. China.

Email: info@biogot.com

Tel: 0086-025-68037686

Fax: 0086-025-68035151