

Tubulin beta III polyclonal antibody

Catalog: AP0013

Host: Rabbit

Reactivity: Human, Mouse, Rat

Background:

Beta III tubulin is abundant in the central and peripheral nervous systems (CNS and PNS) where it is prominently expressed during fetal and postnatal development. As exemplified in cerebellar and sympathoadrenal neurogenesis, the distribution of beta III is neuron-associated, exhibiting distinct temporospatial gradients according to the regional neuroepithelia of origin. However, transient expression of this protein is also present in the subventricular zones of the CNS comprising putative neuronal and/or glial precursor cells, as well as in Kulchitsky neuroendocrine cells of the fetal respiratory epithelium.

Product:

Rabbit IgG, 1mg/ml in PBS with 0.02% sodium azide, 50% glycerol, pH7.2

Molecular Weight:

~ 55 kDa

Swiss-Prot:

Q13509

Purification&Purity:

The antibody was affinity-purified from rabbit antiserum by affinity-chromatography using epitope-specific immunogen and the purity is > 95% (by SDS-PAGE).

Applications:

WB: 1:500~1:1000

IHC: 1:50~1:200

IF: 1:200

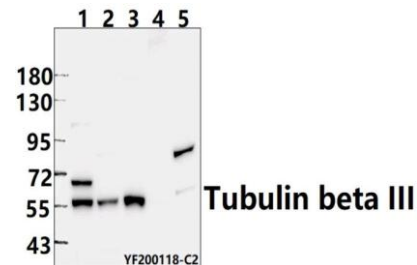
Storage&Stability:

Store at 4 °C short term. Aliquot and store at -20 °C long term. Avoid freeze-thaw cycles.

Specificity:

Tubulin beta III polyclonal antibody detects endogenous levels of Tubulin beta III protein and does not cross-react with other tubulin isoforms.

DATA:



Western blot (WB) analysis of Tubulin beta III pAb at 1:500 dilution

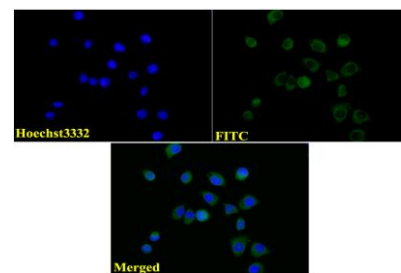
Lane1:A549 whole cell lysate(40ug)

Lane2:PC12 whole cell lysate(40ug)

Lane3:MEF whole cell lysate(40ug)

Lane4:The kidney tissue lysate of Mouse(40ug)

Lane5:The lung tissue lysate of Rat(40ug)



IF image of AP0013 stained A549 cells. The cells were 4% paraformaldehyde fixed (20 min) and then incubated in 10% normal goat serum for 1h to permeabilise the cells and block non-specific protein-protein interactions. The cells were then incubated with the antibody Tubulin beta III #AP0013(1:100) at 10 µg/ml overnight at +4 °C. The secondary antibody (Green) was Goat Anti-Rabbit IgG (H+L) FITC #BS10950 used at a 1/1000 dilution for 1h. Hoechst33342 #BD5011 was used to stain the cell nuclei (blue).

Note:

For research use only, not for use in diagnostic procedure.

Bioworld Technology, Inc.

Add: 1660 South Highway 100, Suite 500 St. Louis Park, MN 55416, USA.

Email: info@bioworld.com

Tel: 6123263284

Fax: 6122933841

Bioworld technology, co. Ltd.

Add: No 9, weidi road Qixia District Nanjing, 210046, P. R. China.

Email: info@biogot.com

Tel: 0086-025-68037686

Fax: 0086-025-68035151